

PET-10 2.5 GALLON PRESSURE POT

FEATURES

- Heavy duty pressure pot features a removable stainless steel inner tank liner and stainless steel pick up tube for easy cleaning
- Suitable for use with both solvent and waterborne materials using any ANEST IWATA pressure feed spray gun
- Includes dual regulators for independent control of fluid and air pressures
- Features standard 1/4" air inlet and 3/8" fluid inlet with a maximum operating pressure of 58 PSI



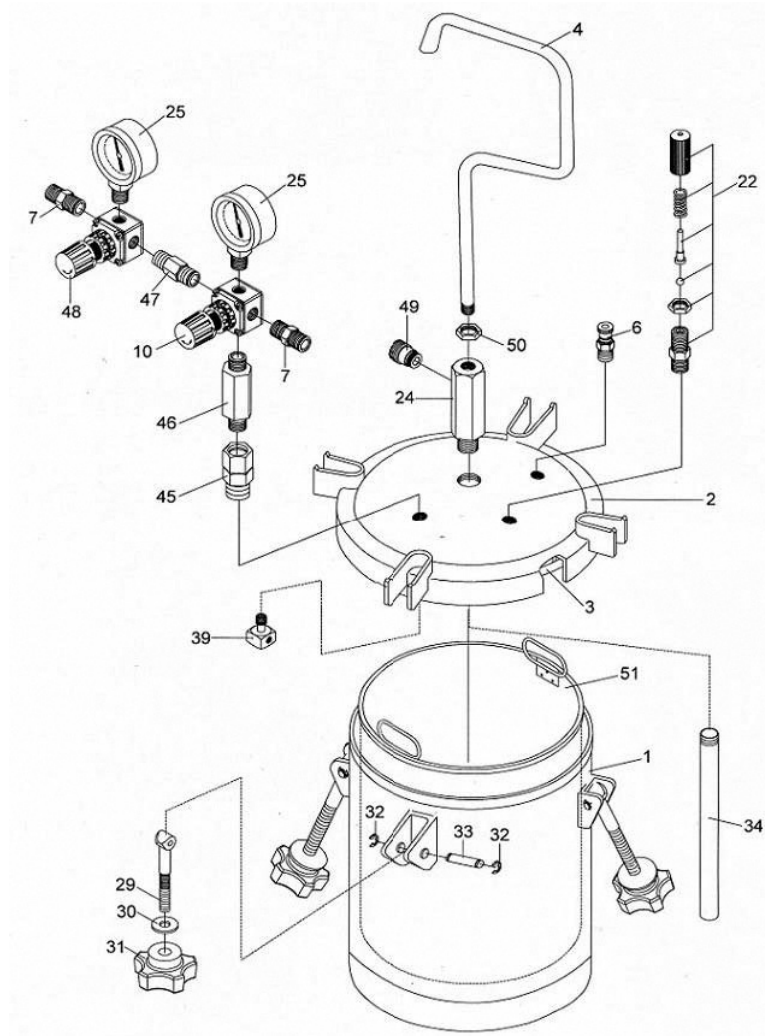
Technical	
Max Operating Pressure	58 PSI
Air Inlet/Outlet Joint	G1/4"
Fluid Outlet Joint	G3/8"
Capacity	2.6 gal
Inner Tank Capacity	2.2 gal - Stainless Steel
Weight	24.25 lbs
Dimensions	12.2 x 12.2 x 22.2 in
Temperature Range	41-104°F / 5-40°C



Removable Inner Tank Liner
in Stainless Steel



PET-10 2.5 GALLON PRESSURE POT



PET-10 SPARE PARTS

Ref.	Code	Description
	6315	PET-10 2 GALLON PRESSURE POT
	04020000	MAIN BODY
2	04020010	LID ASSEMBLY
3	04020200	LID PACKING
4	04020020	HANDLE
6	04020030	EXHAUST VALVE
7	94020210	AIR INLET JOINT / OUTLET JOINT G1/4"
10	94008260	PRESSURE REGULATOR (FOR TANK)
22	04016390	SAFETY VALVE
24	04020040	FLUID OUTLET CONNECTING JOINT SUS 303
25	04016020	PRESSURE GAUGE
29	04020190	HANDLE BOLT
30	04020060	WASHER

Ref.	Code	Description
31	04020070	THUMB NUT
32	04020220	C-SNAP RING
33	04020230	STUD
34	04020090	SUCTION PIPE SUS 303
39	94016310	AIR FLOW GUIDE
45	94020100	ADAPTER
46	94020110	ADAPTER
47	94020120	ADAPTER
48	04020130	PRESSURE REGULATOR (FOR GUN)
49	04020140	FLUID OUTLET JOINT SUS 303 3/8"
50	04020160	NUT
51	04020170	INNER TANK SUS 304