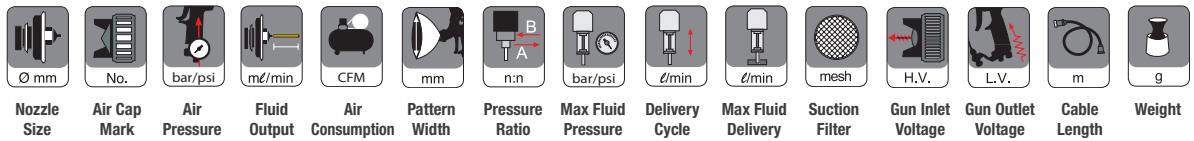




ANEST IWATA Americas, Inc.
AUTOMOTIVE COATING EQUIPMENT

ICONS EXPLAINED



HOW TO READ CHARTS

1. MODEL NAME
2. DESCRIPTION
3. NOZZLE SIZE
4. CODE
5. AIR CAP SET
6. NOZZLE & NEEDLE

ORDER INFORMATION - W-101 PRESSURE					
1	W-101	Ø 0.8	Ø 1.0	3 Ø 1.3	Ø 1.5
2	PRESSURE SPRAY GUN	4400B	4403B	4 4405B	4407B
6	NOZZLE + NEEDLE SET	93706610	93691610	93666610	93698610
5	AIR CAP SET	E2P 93704610			

NOZZLE CONVERSIONS

MM	INCH	MM	INCH	MM	INCH
0.4	0.016	1.3	0.051	1.9	0.075
0.6	0.024	1.4	0.055	2.0	0.079
0.8	0.031	1.5	0.059	2.5	0.098
1.0	0.039	1.6	0.063	3.0	0.12
1.1	0.043	1.7	0.067	3.5	0.14
1.2	0.047	1.8	0.071		

FAN PATTERN CONVERSIONS

MM	INCH	MM	INCH	MM	INCH
0	0	210	8.2677	420	16.535
10	0.3937	220	8.6614	430	16.929
20	0.7874	230	9.0551	440	17.323
30	1.1811	240	9.4488	450	17.717
40	1.5748	250	9.8425	460	18.11
50	1.9685	260	10.236	470	18.504
60	2.3622	270	10.63	480	18.898
70	2.7559	280	11.024	490	19.291
80	3.1496	290	11.417	500	19.685
90	3.5433	300	11.811	510	20.079
100	3.937	310	12.205	520	20.472
110	4.3307	320	12.598	530	20.866
120	4.7244	330	12.992	540	21.26
130	5.1181	340	13.386	550	21.654
140	5.5118	350	13.78	560	22.047
150	5.9055	350	14.173	570	22.441
160	6.2992	370	14.567	580	22.835
170	6.6929	380	14.961	590	23.228
180	7.0866	390	15.354	600	23.622
190	7.4803	400	15.748	610	24.016
200	7.874	410	16.142	620	24.409



1. MANUAL HVLP/COMPLIANT SPRAY GUNS

PRIMER/SEALER

- W-400-LV-WBX COMPLIANT GRAVITY 8

PRIMER / SEALER / SPOT REPAIR

- LPH-300-LV HVLP GRAVITY 10

BASE COAT

- LS-400 SERIES 2 BASE HVLP GRAVITY 12
- WS-400 SERIES 2 BASE COMPLIANT GRAVITY 14
- LS-400 SUPERNOVA ENTECH HVLP GRAVITY **DISCONTINUED 2025** 16
- LPH-400-LV | LPH-400-LVX HVLP GRAVITY 18

BASE COAT / CLEAR COAT

- W-400-LV COMPLIANT GRAVITY 20

CLEAR COAT

- WS-400 SERIES 2 CLEAR COMPLIANT GRAVITY 22
- WS-400HD SUPERNOVA EVOTECH COMPLIANT GRAVITY **DISCONTINUED 2025** 24

TOUCH-UP / SPOT REPAIR / GRAPHICS

- LPH-80 HVLP GRAVITY 26

GENERAL PURPOSE

- AIR GUNSA AZ3 HTE-S IMPACT HVLP GRAVITY 28
- AIR GUNSA AZ3 HV-2 HVLP GRAVITY 30

DIY

- KATANA PLUS HVLP GRAVITY DIY SPRAY GUN 32

3. CUPS-ADAPTERS-AIR REGULATORS-HOSES

- FAST FLOW SYSTEM SEALED SPRAY CUPS 33
- ALUMINUM GRAVITY CUPS 34
- AIR REGULATORS 34
- SIDE GRAVITY CUPS 35
- PLASTIC GRAVITY CUPS 36
- SIPHON CONTAINERS 37
- HOSES AND FITTINGS FOR LOW PRESSURE APPLICATIONS 38

4. FLEET APPLICATIONS

- WS-200 SERIES CONVENTIONAL PRESSURE 40
- WIDER1L HVLP PRESSURE 42
- WIDER2L HVLP PRESSURE 44
- AIR GUNSA AZ1-HVLP-CONCEPT PRESSURE 46
- PC-18D 2 QUART PRESSURE POT 48
- PC-18DT - PTFE COATED 2 QUART PRESSURE POT 49
- PET-10 2.5 GALLON PRESSURE POT 50

5. ACCESSORIES

- PREMIUM MICRO-FABRIC SPRAY SUIT BY FBS PROPLUS GARD 52
- ANEST IWATA SPRAY GUN CABINET 53
- ANEST IWATA MK-5 PROFESSIONAL 53

6. IWATA AIRBRUSHES

- IWATA ECLIPSE SERIES AIRBRUSHES 54
- NEO FOR IWATA CN AND BCN AIRBRUSHES 56
- IWATA AIR COMPRESSORS 58

Part numbers, images, and availability are subject to change without notice.

Catalogs, price lists, and other advertising materials are produced for informational purposes only. No information contained in these documents shall be constituted as a binding offer from the manufacturer or manufacturer's distributor.



ANEST IWATA Corporation, with headquarters located in Shin-Yokohama Japan, is a world-leader in the development and manufacture of high-quality air compressors, vacuum pumps, coating equipment & systems and liquid handling equipment & systems.

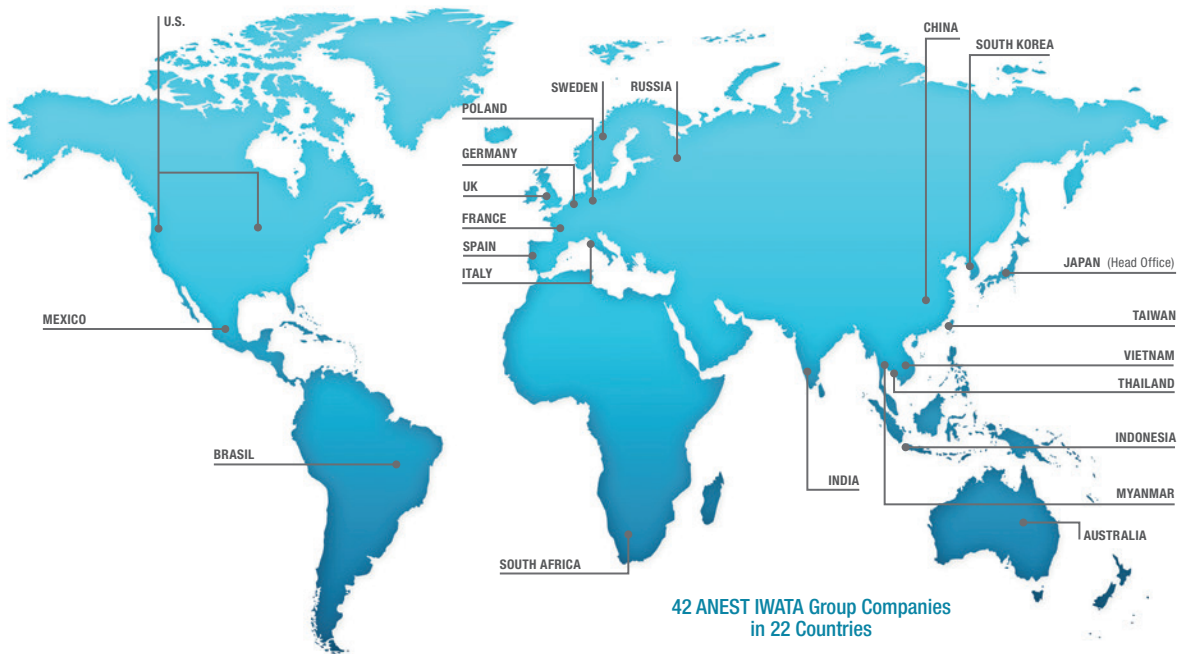
It was founded in 1926 as Iwata Seisakusho and was the very first production of spray guns in Japan.

The company name was changed from Iwata Seisakusho to Iwata Air Compressor Mfg. Col, Ltd. in 1957.

In 1973 Iwata Air Compressor Mfg. Col, Ltd. went public and was listed on both the Tokyo and Osaka stock exchange.

In 1996 the Iwata Air Compressor Mfg. Col, Ltd. company name was changed to its current name ANEST IWATA

Today ANEST IWATA is represented around the world through 42 group companies and subsidiaries and employs about 1,745 employees worldwide. www.anest-iwata.co.jp.



ANEST IWATA group companies work together (ONE ANEST IWATA) to provide unique (ONLY ONE) products and become NUMBER ONE (No. 1) in each market we serve.



Iwata is the airbrush brand and is represented at the global headquarters of ANEST Iwata-Medea, Inc., in Portland, Oregon. www.iwata-airbrush.com

ANEST IWATA Americas, Inc. is located in West Chester, Ohio and is responsible for North American sales and distribution of ANEST IWATA products and systems.



Where Passion, Innovation, and Creativity Meet.



Your passion fuels our innovation and creativity for developing coating solutions and technologies that drive our industries forward.

Our passion is to inspire and elevate your creativity and innovation by delivering high quality, easy to use coating solutions that you can trust each and every time.

When passion, innovation, and creativity meet – that's **TEAM IWATA.**

#TeamIwata



The Tools You Need to Succeed www.AnestIwataPortal.com

Quickly find these resources and more...

- ANEST IWATA Brand Assets and Images
- Catalogs, Brochures and Sales Sheets
- Environmental and Compliancy Letters
- Troubleshooting and Maintenance



Scan QR code to visit site



P R O V E N
SPLIT NOZZLE™
 T E C H N O L O G Y



SAVE TIME
 WITH LESS REWORK

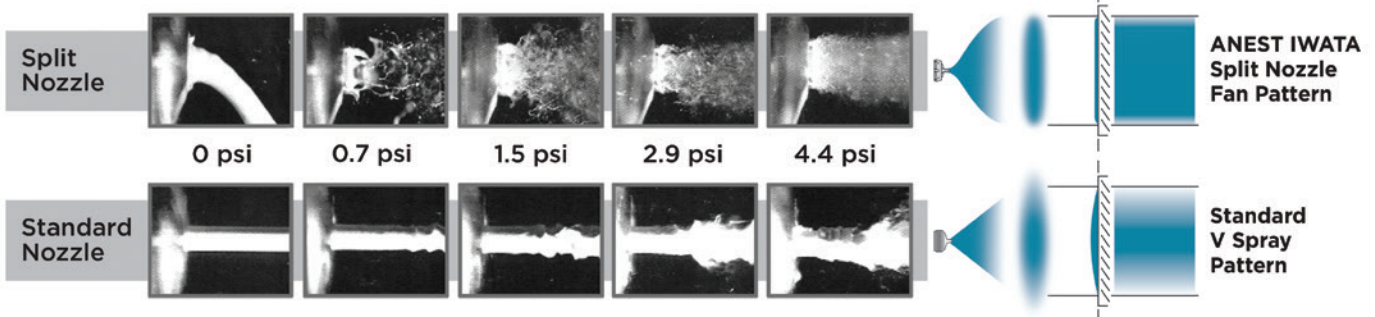
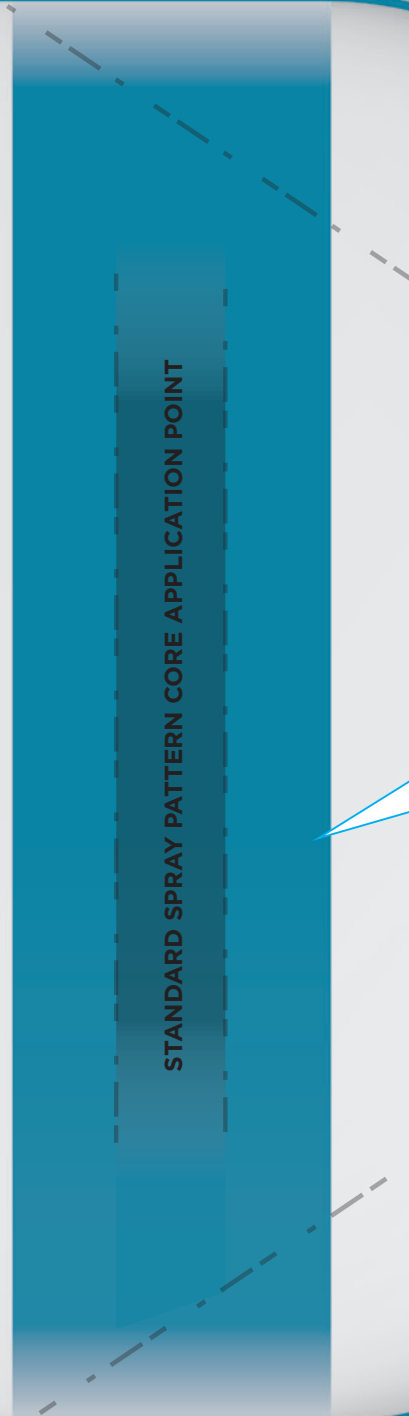
Split Nozzle Technology evenly distributes droplets for a uniform flat finish requiring less polishing to speed up production.

SAVE MATERIALS
 WITH LESS OVERSPRAY

Split Nozzle Technology creates our unique ANEST IWATA Split Nozzle Fan Pattern with larger core application point resulting in better transfer efficiency saving you material.

SAVE ENERGY
 WITH LESS AIR CONSUMPTION

Spray guns with Split Nozzle Technology spray at a low psi for lower compressor cycle times and electrical savings.



**ANEST IWATA
Split Nozzle
Fan Pattern**

STANDARD V SPRAY PATTERN

**ANEST IWATA
Split Nozzle Fan
Pattern Core
Application Point**

The core application point is where paint is most consistent.



**Proven Split Nozzle
Dual-Atomization for
a Uniform Flat Finish**

W-400-LV-WBX

NORTH AMERICAN EXCLUSIVE



FEATURES

- Compliant spray gun that meets EPA NESHAP 40 CFR, Part 63 Subpart 6H
- Proven Split Nozzle™ Technology for increased material savings
- Tulip inspired spray pattern
- Ideal for general purpose use
- Minimal wear parts for easy maintenance

TECHNICAL



W-400-LV-WBX NORTH AMERICAN EXCLUSIVE

Model	Ø mm	No.	bar/psi	ml/min	CFM	mm
W-400-LV-12WBX	1.2	W400 LVWBX (RED)	1.4/20	100	10.5	260
W-400-LV-13WBX	1.3					280
W-400-LV-14WBX	1.4					300
W-400-LV-15WBX	1.5					305
W-400-LV-16WBX	1.6					315
W-400-LV-18WBX	1.8					335

• Air Nipple: G1/4" • Fluid Nipple: M16 X 1.5m

Red air cap marked max 20 psi /W400LVWBX indicates compliant model specifically intended for use in North America. No other model marked with "WBX" or marketed under the WBX Series has been approved for use in the United States by any environmental agency or governing body. Use of any non-compliant spray equipment in a regulated area can lead to costly fines and additional penalties for the individual user and their employer.



WBX Spray Gun Kit Blue Edition
Part #9278

Blue Kit Includes: W-400-LV-WBX 1.3 Gravity Compliant Spray Gun, 1.5 Nozzle (use with 1.3 needle), 1.2 Nozzle Needle Set, 700 ml Aluminum Gravity Cup, Air Regulator, Spray Gun Lubricant, Brush, Wrench

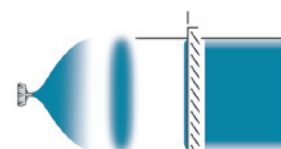


WBX Spray Gun Kit Red Edition
Part #9279

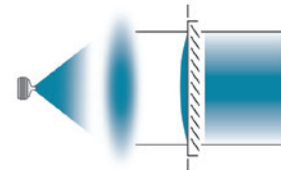
Red Kit Includes: W-400-LV-WBX 1.8 Gravity Compliant Spray Gun, 1.5 Nozzle (use with 1.5 needle), 1.3 Nozzle Needle Set, 700 ml Aluminum Gravity Cup, Air Regulator, Spray Gun Lubricant, Brush, Wrench

See page 63-64
for cup options
(sold separately)

PROVEN SPLIT NOZZLE™ TECHNOLOGY



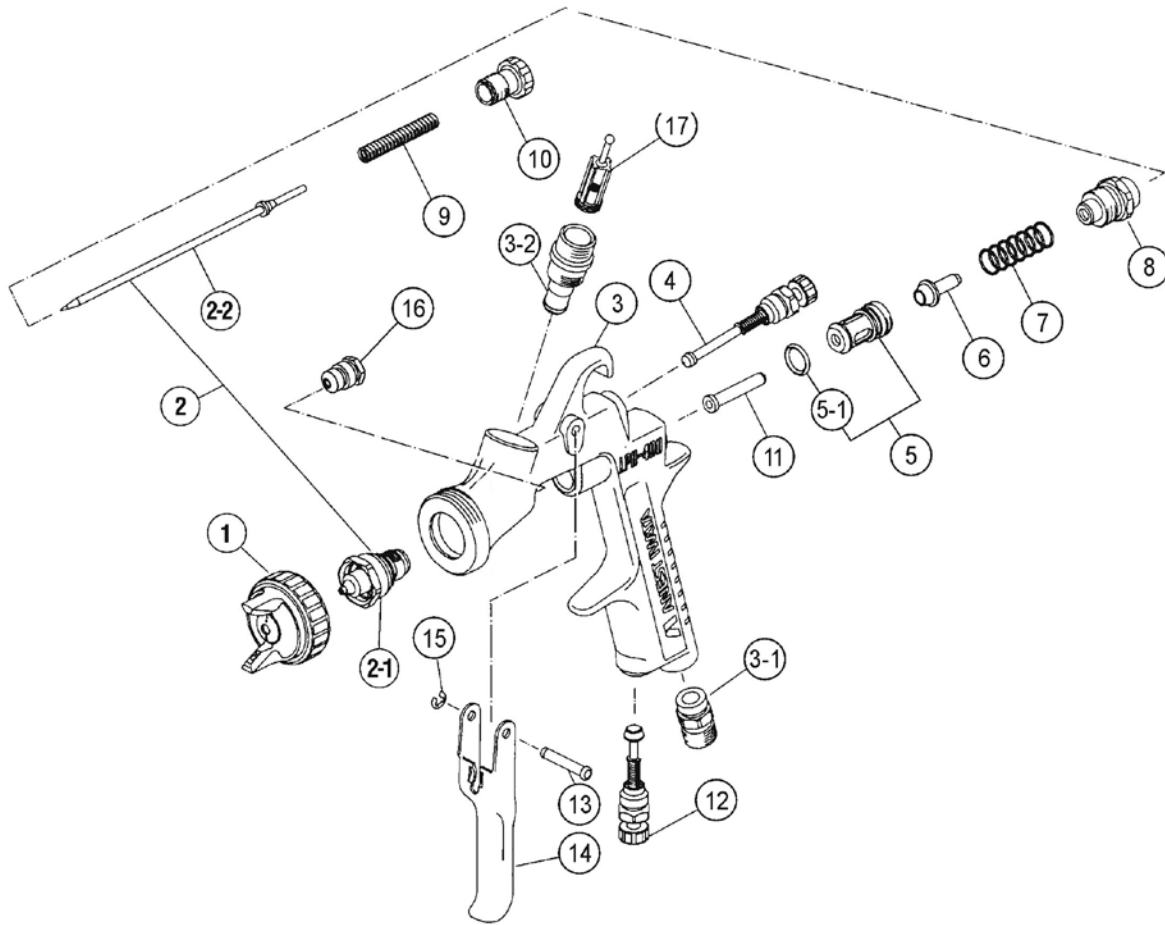
Split Nozzle



Standard Nozzle

ORDER Information - W-400-LV-WBX W/ REGULATOR

	ø 1.2	ø 1.3	ø 1.4	ø 1.5	ø 1.6	ø 1.8
GRAVITY SPRAY GUN	2112	2113	2114	2115	2116	2118
NOZZLE + NEEDLE SET	93627610	93634610	93628610	93014560	93622620	93635620
AIR CAP SET	93549999					



SPARE PARTS

Ref.	Code	Description	
1		AIR CAP SET	
2		NOZZLE + NEEDLE SET	
3-1	93660300	AIR NIPPLE	1/4"
3-2	93650531	FLUID NIPPLE	M16X1.5
4	93842601	PATTERN ADJ. SET	
5	93843530	AIR VALVE SEAT SET	
5-1	96638008	O RING	
6	93591530	AIR VALVE	
7	93719530	AIR VALVE SPRING	
8	93844532	FLUID ADJUST GUIDE SET	
9	93593530	FLUID NEEDLE SPRING	
10	93594532	FLUID ADJUST KNOB	
11	93935430	AIR VALVE SHAFT	
12	93845531	AIR ADJUST SET	
13	93667360	TRIGGER STUD	
14	93517600	TRIGGER	
15	93912030	STOPPER	(2 PCS./1PK.)
16	93765610	CARTRIDGE PACKING	
17	93515500	FILTER	60 MESH

ACCESSORIES

Ref.	Code	Description
	93708240	AIR CAP PACKING (WHITE)
	93512600	AIR CAP PACKING (BLACK)
	2950	MK5 MAINTENANCE KIT
	5650	REPAIR SERVICE KIT (includes: 4, 7-1, 9, 11, 15, 17)

LPH-300-LV



LPH-300-LV
with PCG7D2
Cup

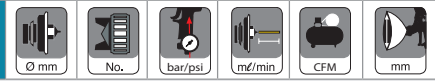


LPH-300-LV HVLP
Gravity Spray Gun Kit
Part #9277

FEATURES

- HVLP spray gun with low operating air pressure
- Proven Split Nozzle™ Technology for increased material savings
- Rounded pattern produces low overspray
- Extremely low air supply pressure, only 14.5 PSI
- Very low air consumption
- Pleasant lightweight handling
- Finer atomization is suitable for wet on wet topcoat (1.4/1.6 mm)
- Simple operation of the control knobs for both right and left handers
- Conical seal nozzle, minimum wear parts
- Quality surface for an easy cleaning
- Easy maintenance
- Recommended for UV coatings

TECHNICAL



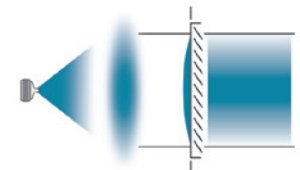
LPH-300-LV						
LPH-300-124LV	1.2	LV4	1.3/18	8.5	70	210
LPH-300-134LV	1.3				80	230
LPH-300-144LV	1.4				90	250
LPH-300-164LV	1.6				110	230
LPH-300-184LV	1.8				130	230
LPH-300-204LV	2.0				150	230

Air Nipple: G1/4" • Fluid Nipple: G1/4"

**PROVEN
SPLIT NOZZLE™
TECHNOLOGY**



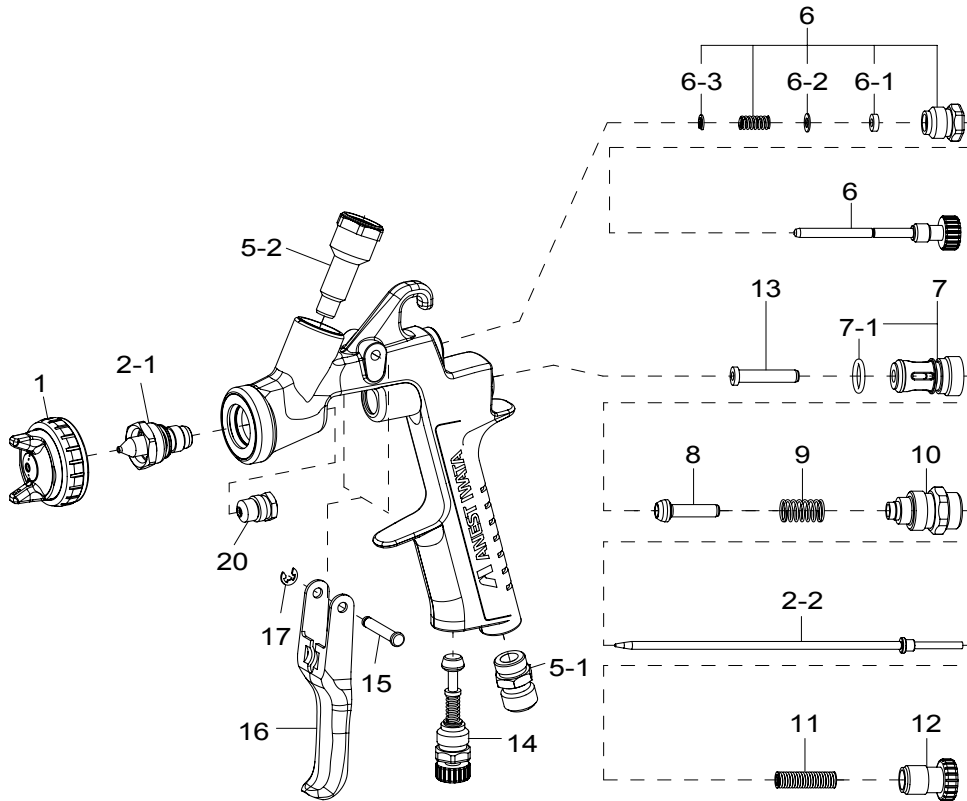
Split Nozzle



Standard Nozzle

ORDER Information - LPH-300-LV

	ø 1.2	ø 1.3	ø 1.4	ø 1.6	ø 1.8	ø 2.0
GRAVITY SPRAY GUN LPH-300-LV	3940	3955	3945	3950	3960	3965
GRAVITY SPRAY GUN + PCG4D2 - 400ML	3941	3956	3946	3951	3961	3966
GRAVITY SPRAY GUN + PCG600P-2 - 600ML	3943	3958	3948	3953	3963	3968
GRAVITY SPRAY GUN + PCG7D2 - 700ML	3942	3957	3947	3952	3962	3967
NOZZLE + NEEDLE SET	93867600	93623600	93862600	93869600	93871600	93621600
AIR CAP SET	93875602					



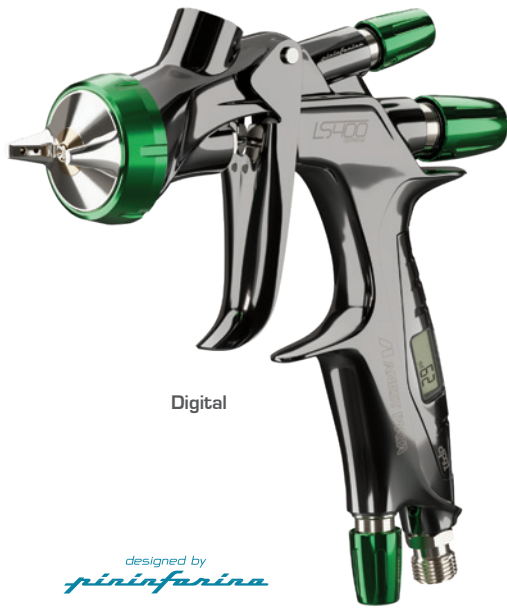
SPARE PARTS

Ref.	Code	Description	Qty.
1	93875602	AIR CAP SET	
2-1+ 2-2		NOZZLE + NEEDLE SET	
5-1	93660300	AIR NIPPLE	
5-2	93575620	FLUID NIPPLE	
6	93577620	PATTERN ADJ. SET	
6-1		STOPPER	Sold as Ref. 6
6-2		WASHER	Sold as Ref. 6
6-3		BACK RING	Sold as Ref. 6
7	93843530	AIR VALVE SEAT SET	
7-1	96638008	O RING	
8	93591530	AIR VALVE	
9	93719530	AIR VALVE SPRING	
10	93844532	FLUID ADJ. GUIDE SET	
11	93593530	FLUID NEEDLE SPRING	
12	93594532	FLUID ADJ. KNOB	
13	93935430	AIR VALVE SHAFT	
14	93845531	AIR ADJ. SET	
15	93667360	TRIGGER STUD	
16	93597530	TRIGGER	
17	93912030	E STOPPER	2 pcs./1 pk.
20	93765610	NEEDLE PACKING CARTRIDGE	

ACCESSORIES

Ref.	Code	Description
	93576530	AIR CAP PACKING (WHITE)
	93608320	AIR CAP PACKING (BLACK)
	2950	MK5 MAINTENANCE KIT
	5650	REPAIR SERVICE KIT (includes: 7-1, 9, 11, 15, 17, 20)
	2985B	TEST CAP GAUGE SET "LPH100-LV4"

LS-400 SERIES 2 BASE



Digital



Non-Digital

FEATURES

- HVLP spray gun with low operating air pressure
- Exclusive Split Nozzle™ 2.0 Technology for repeatable results and unmatched performance
- Ideal for a wide range of solvent and waterborne base coat applications
- Nozzle configurations to optimize your paint and climate conditions
- Optional DPG1 high-performance digital pressure regulator allows air adjustment convenience without disrupting the spray gun ergonomics

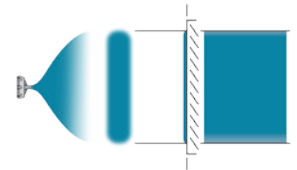
TECHNICAL	digital	ø mm	application speed	no.	bar/psi	m ² /min	CFM	mm/in
-----------	---------	------	-------------------	-----	---------	---------------------	-----	-------

ET: FOR STANDARD CLIMATE APPLICATION									
LS-400-SR2D-1206	Y	1.2 ET	CONTROL	LS-400-06	1.8/26	165	14.1	230/9.1	
LS-400-SR2-1206			STANDARD					235/9.3	
LS-400-SR2D-1306	Y	1.3 ET	STANDARD					175	240/9.4
LS-400-SR2-1306								185	
LS-400-SR2D-1406	Y	1.4 ET	SPEED					185	245/9.6
LS-400-SR2-1406								190	
LS-400-SR2D-1506	Y	1.5 ET	HIGH SPEED	190					
LS-400-SR2-1506									

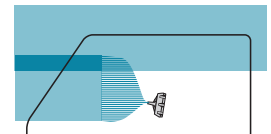
ETS: FOR HOT/DRY CLIMATE APPLICATION									
LS-400-SR2D-12S06	Y	1.2 ETS	CONTROL	LS-400-06	1.8/26	160	14.8	200/7.9	
LS-400-SR2-12S06			STANDARD					205/8.1	
LS-400-SR2D-13S06	Y	1.3 ETS	STANDARD					170	210/8.3
LS-400-SR2-13S06								185	
LS-400-SR2D-14S06	Y	1.4 ETS	SPEED					185	215/8.5
LS-400-SR2-14S06								195	
LS-400-SR2D-15S06	Y	1.5 ETS	HIGH SPEED	195					
LS-400-SR2-15S06									

Air Nipple: G1/4" • Fluid Nipple: G1/4"

SERIES 2 EXCLUSIVE SPLIT NOZZLE™ 2.0



Optimized ANEST IWATA Fan Pattern

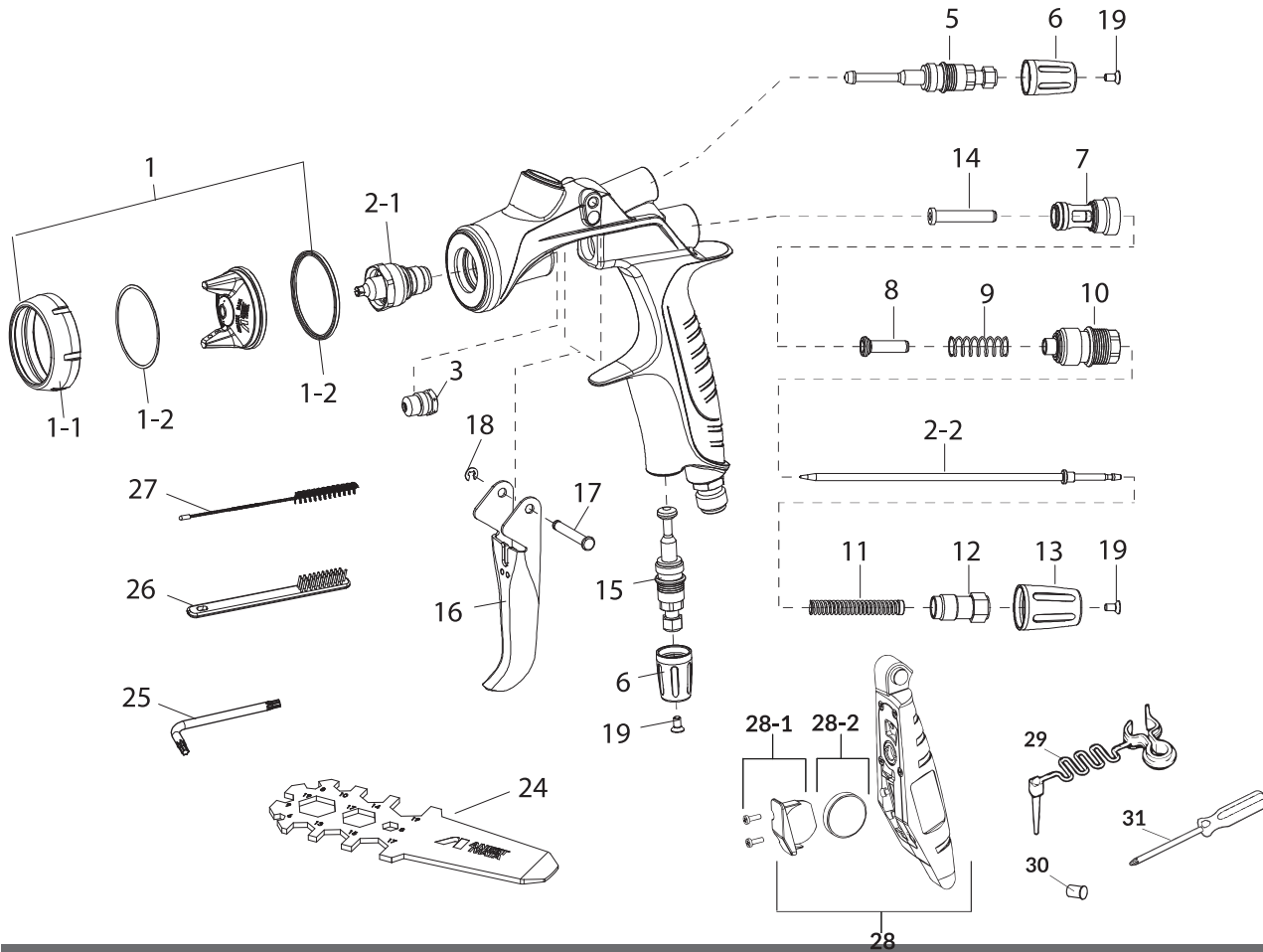


50-15% overlap

ORDER Information

	1.2 ET	1.3 ET	1.4 ET	1.5 ET	1.2 ETS	1.3 ETS	1.4 ETS	1.5 ETS
DIGITAL GRAVITY SPRAY GUN	2912D	2913D	2914D	2915D	2912SD	2913SD	2914SD	2915SD
NON-DIGITAL GRAVITY SPRAY GUN	2912	2913	2914	2915	2912S	2913S	2914S	2915S
NOZZLE + NEEDLE SET	93008160	93008070	93008180	93008200	93008230	93008250	93008270	93008290
AIR CAP SET	LS-400-06 93008030							

LS-400 SERIES 2 BASE



SPARE PARTS

Ref.	Code	Description	Qty.
1	93008030	AIR CAP SET 06	
1-1	93008060	AIR CAP RING (GREEN)	
1-2	93018310	PACKING SET	2
2.1+2.2	93008160	NOZZLE NEEDLE SET 1.2 ET	
2.1+2.2	93008070	NOZZLE NEEDLE SET 1.3 ET	
2.1+2.2	93008180	NOZZLE NEEDLE SET 1.4 ET	
2.1+2.2	93008200	NOZZLE NEEDLE SET 1.5 ET	
2.1+2.2	93008230	NOZZLE NEEDLE SET 1.2 ETS	
2.1+2.2	93008250	NOZZLE NEEDLE SET 1.3 ET S	
2.1+2.2	93008270	NOZZLE NEEDLE SET 1.4 ETS	
2.1+2.2	93008290	NOZZLE NEEDLE SET 1.5 ETS	
3	93810620	NEEDLE PACKING ASSY	
3	93001410	SELF ADJUSTING NEEDLE PACKING (OPTIONAL)	
5	93008420	PATTERN ADJ. ASSY	
6	93008820	PATTERN ADJ. KNOB (GREEN)	
7	93001640	AIR VALVE SEAT ASSY	
8	93001690	AIR VALVE	
9	93001700	AIR VALVE SPRING	
10	93008840	FLUID ADJ. GUIDE ASSY	
11	93002820	FLUID NEEDLE SPRING ASSY	
12	93505823	FLUID ADJ. SCREW	

Ref.	Code	Description	Qty.
13	93008860	FLUID ADJ. KNOB (GREEN)	
14	93001790	AIR VALVE SHAFT	
15	93008872	AIR ADJ. ASSY	
16	93008890	TRIGGER	
17	93505860	TRIGGER STUD	
18	96612025	E STOPPER	
19	93512741	TORX SOCKET COUNTERSUNK HEAD SCREWS	
24	93538600	UNIVERSAL SPANNER	
25	03506480K	ALLEN WRENCH SET	3
26	W2COM6163	BRUSHES	5
27	W2COM6162	TWISTED BRUSH Ø10MM	5
28	930114A0	DPG-1 PSI	
28-1	930325A0	BATTERY HOLDER SPARE KIT	
28-2	930083A0	BATTERY	
29	930357A0	TRIGGER LOCKING CLIP	
30	930366A0	PLUGS	5
31	960024A0	SCREWDRIVER	

ACCESSORIES

Ref.	Code	Description
	5656	REPAIR SERVICE KIT (7, 9, 11, 14, 10, 17, 18, & 3)

BASE COAT

COMPLIANT GRAVITY SPRAY GUNS



WS-400 SERIES 2 BASE



FEATURES

- Compliant spray gun that meets EPA NESHAP 40 CFR, Part 63 Subpart 6H
- Exclusive Split Nozzle™ 2.0 Technology for repeatable results and unmatched performance
- Ideal for wet on wet basecoat applications
- Nozzle configurations to optimize your paint and climate conditions
- Optional DPG1 high-performance digital pressure regulator allows air adjustment convenience without disrupting the spray gun ergonomics

TECHNICAL



OBS: FOR TYPE A WET ON WET APPLICATION

Model	Digital	1.3 OBS-0	1.3 OBS	1.3 OBS+1	Climate	WS-400-02-OBS	WS-400-03-BF	bar/psi	mL/min	CFM	mm/in
WS-400-SR2D-OBS-0	Y	1.3 OBS-0			HUMID				210		255/10.0
WS-400-SR2D-OBS-0	Y	1.3 OBS	STANDARD*			WS-400-02-OBS	2.0/29		215	13.1	255/10.0
WS-400-SR2-OBS					235						
WS-400-SR2D-OBS+1	Y	1.3 OBS+1	DRY								
WS-400-SR2-OBS+1											260/10.2

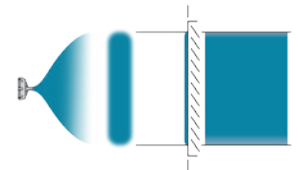
BF: FOR TYPE B WET ON WET APPLICATION

WS-400-SR2D-BF-S	Y	BF-S	STANDARD*			WS-400-03-BF	2.0/29		245	13.1	250/9.8
WS-400-SR2-BF-S					255						
WS-400-SR2D-BF-40	Y	BF-40	HOT & DRY/ EXTREME								
WS-400-SR2-BF-40											260/10.2

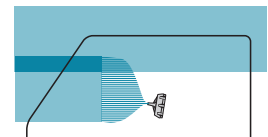
*Standard climate range: 59-86° F (15-30°C) with a humidity of 30%-75% RH

Air Nipple: G1/4" • Fluid Nipple: G1/4"

SERIES 2 EXCLUSIVE SPLIT NOZZLE™ 2.0



Optimized ANEST IWATA Fan Pattern

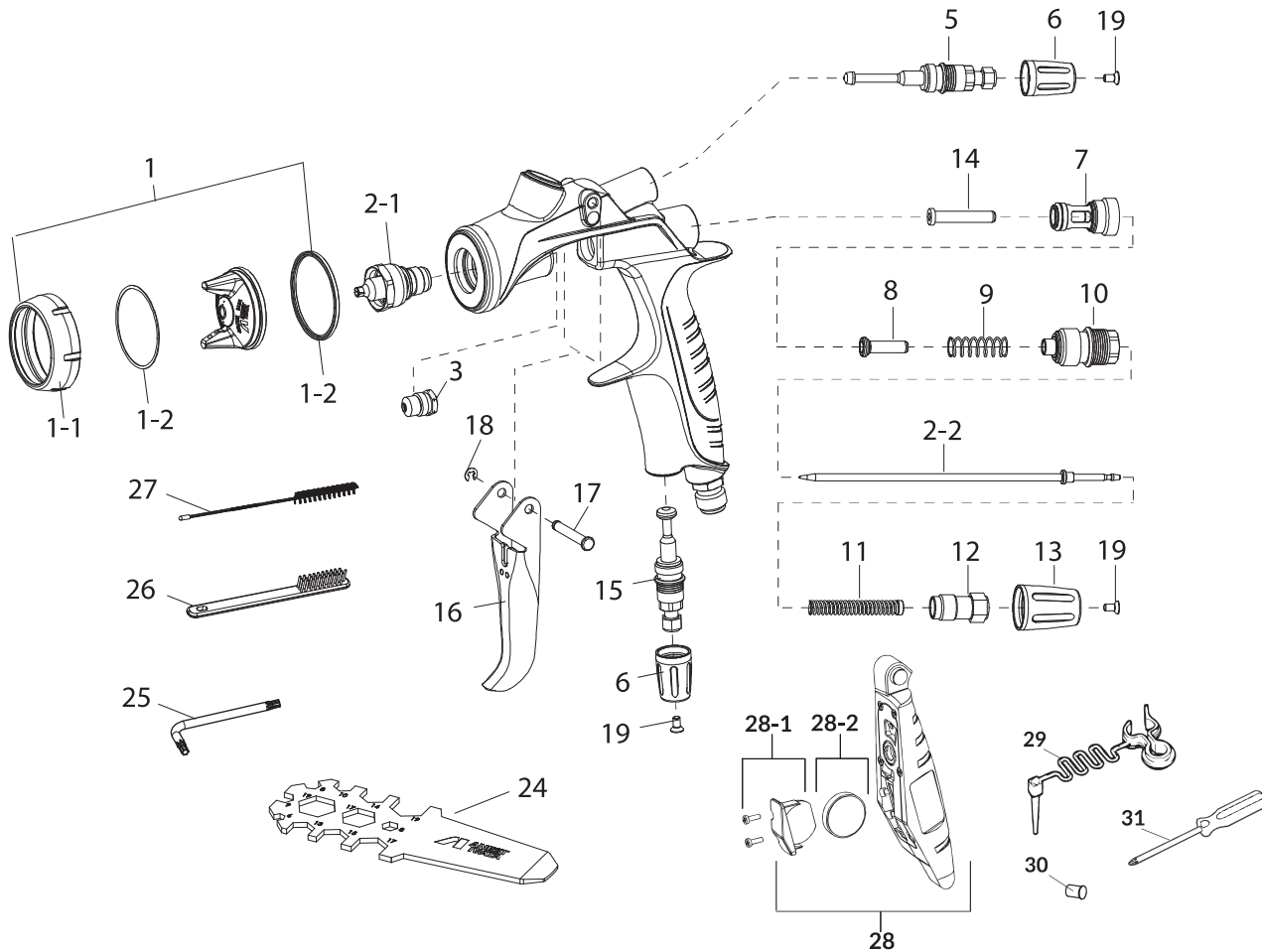


50-15% overlap

ORDER Information

	1.3 OBS-0	1.3 OBS	1.3 OBS+1	BF-S	BF-40
DIGITAL GRAVITY SPRAY GUN	2916D	2917D	2918D	2920D	2921D
NON-DIGITAL GRAVITY SPRAY GUN	2916	2917	2918	2920	2921
NOZZLE + NEEDLE SET	93008930	93008340	93008990	93018150	93021390
AIR CAP SET	WS-400-02-OBS 93008310			WS-400-03-BF 93018140	

WS-400 SERIES 2 BASE



SPARE PARTS

Ref.	Code	Description	Qty.
1	93008310	AIR CAP SET 02-OBS	
1	93018140	AIR CAP SET 03-BF	
1-1	93008330	AIR CAP RING (BLUE)	
1-2	93018310	PACKING SET	2
2.1+2.2	93008930	NOZZLE NEEDLE SET OBS-0	
2.1+2.2	93008340	NOZZLE NEEDLE SET OBS	
2.1+2.2	93008990	NOZZLE NEEDLE SET OBS+1	
2.1+2.2	93018150	NOZZLE NEEDLE SET BF-S	
2.1+2.2	93021390	NOZZLE NEEDLE SET BF-40	
3	93810620	NEEDLE PACKING ASSY	
3	93001410	SELF ADJUSTING NEEDLE PACKING (OPTIONAL)	
5	93008420	PATTERN ADJ. ASSY	
6	93008140	PATTERN ADJ. KNOB (BLUE)	
7	93001640	AIR VALVE SEAT ASSY	
8	93001690	AIR VALVE	
9	93001700	AIR VALVE SPRING	
10	93008840	FLUID ADJ. GUIDE ASSY	
11	93002820	FLUID NEEDLE SPRING ASSY	
12	93505823	FLUID ADJ. SCREW	
13	93008150	FLUID ADJ. KNOB (BLUE)	
14	93001790	AIR VALVE SHAFT	

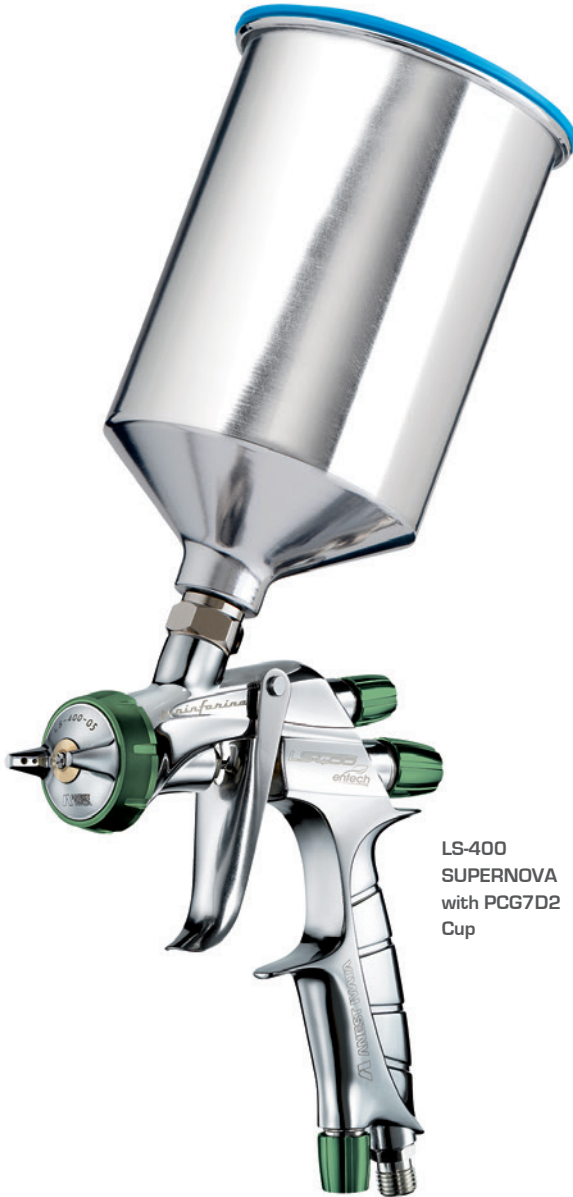
Ref.	Code	Description	Qty.
15	93008872	AIR ADJ. ASSY	
16	93008890	TRIGGER	
17	93505860	TRIGGER STUD	
18	96612025	E STOPPER	
19	93512741	TORX SOCKET COUNTERSUNK HEAD SCREWS	
24	93538600	UNIVERSAL SPANNER	
25	03506480K	ALLEN WRENCH SET	3
26	W2COM6163	BRUSHES	5
27	W2COM6162	TWISTED BRUSH Ø10MM	5
28	930114A0	DPG-1 PSI	
28-1	930325A0	BATTERY HOLDER SPARE KIT	
28-2	930083A0	BATTERY	
29	930357A0	TRIGGER LOCKING CLIP	
30	930366A0	PLUGS	5
31	960024A0	SCREWDRIVER	

ACCESSORIES

Ref.	Code	Description
	5656	REPAIR SERVICE KIT (7, 9, 11, 14, 10, 17, 18, & 3)

LS-400 SUPERNOVA ENTECH

DISCONTINUED 2025

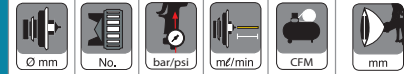


LS-400
SUPERNOVA
with PCG7D2
Cup

FEATURES

- HVLV spray gun with low operating air pressure
- Proven Split Nozzle™ Technology for increased material savings
- Excellent for solvent or waterborne base coat and clear coat application
- Large fan pattern
- Superior transfer efficiency
- Quality surface for easy cleaning

TECHNICAL

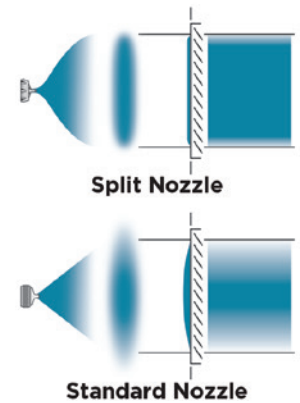


LS-400 SUPERNOVA ENTECH

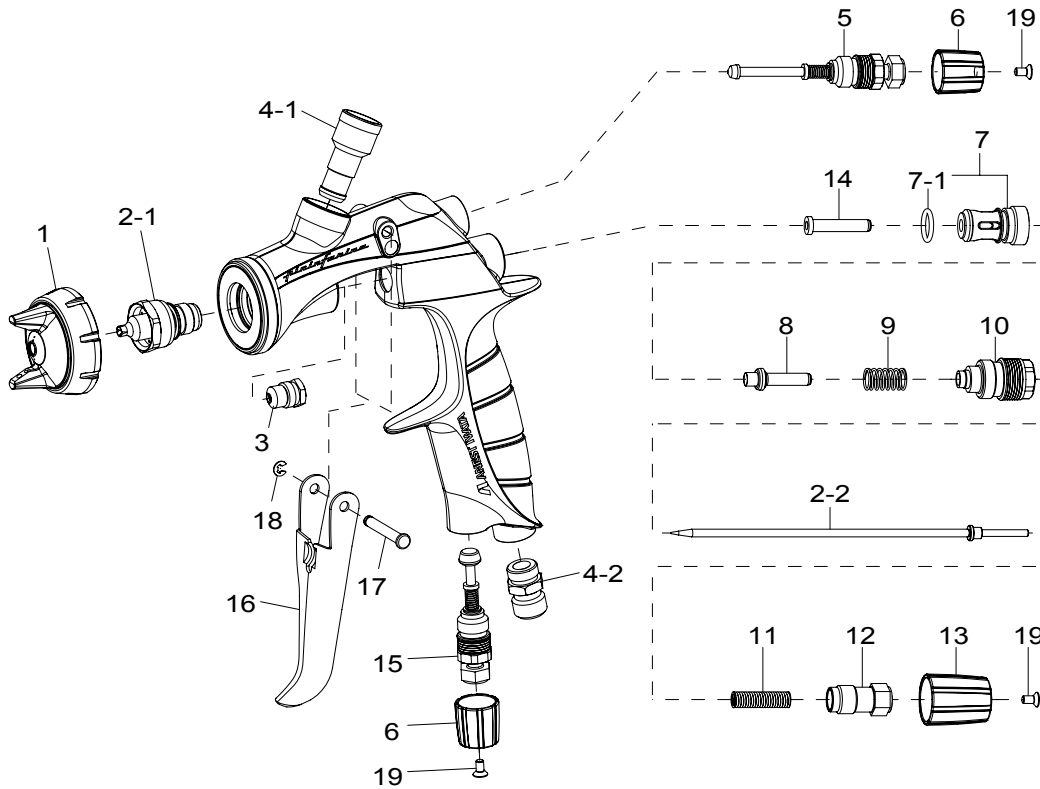
LS-400-1205	1.2	05	1.8/26	150	14.83	305
LS-400-1305	1.3			160		310
LS-400-1405	1.4			180		320
LS-400-1505	1.5			190		

• Air Nipple: G1/4" • Fluid Nipple: G1/4"

**PROVEN
SPLIT NOZZLE™
TECHNOLOGY**



LS-400 SUPERNOVA ENTECH



SPARE PARTS

Ref.	Code	Description	Qty.
1	93512100	AIR CAP SET LS-400-05	
2.1+2.2	93512760	Ø 1.2 NOZZLE + NEEDLE SET	
2.1+2.2	93512780	Ø 1.3 NOZZLE + NEEDLE SET	
2.1+2.2	93513120	Ø 1.4 NOZZLE + NEEDLE SET	
2.1+2.2	93513140	Ø 1.5 NOZZLE + NEEDLE SET	
3	93765610	CARTRIDGE PACKING	
4-1	93505421	FLUID NIPPLE	1/4"
4-2	93660300	AIR NIPPLE	1/4"
5	93505432	PATTERN ADJUST SET	
6	93512290	ADJUST KNOB	GREEN
7	93843530	AIR VALVE SEAT SET	
7-1	96638008	O RING	
8	93505480	AIR VALVE	
9	93719530	AIR VALVE SPRING	
10	93505492	FLUID ADJUST GUIDE SET	
11	93593530	FLUID NEEDLE SPRING	
12	93505822	FLUID ADJ. SCREW SET	
13	93512730	FLUID ADJUST KNOB	GREEN
14	93935430	AIR VALVE SHAFT	
15	93505842	AIR ADJUST SET	
16	93505850	TRIGGER	

Ref.	Code	Description	Qty.
17	93505860	TRIGGER STUD	
18	96612025	E STOPPER	
19	93506970	TORQUE SCREW	

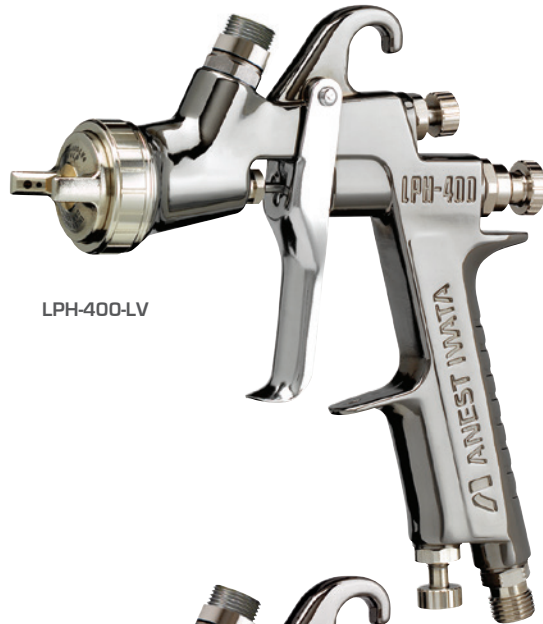
Special Effects ET Nozzle for Xirallic

	Ø 1.0	Ø 1.1	Ø 1.2
ET NOZZLE	93003150	93003190	93512150
ET FLUID NEEDLE	93829600		

ACCESSORIES

Ref.	Code	Description
	93505341	AIR CAP GASKET (BLACK)
	93505330	AIR CAP GASKET (WHITE)
	2978	TEST CAP GAUGE SET 05
	5652	REPAIR SERVICE KIT (Includes: 3, 7, 9, 11, 17, & 18)

LPH-400-LV | LPH-400-LVX



LPH-400-LV



LPH-400-LVX

FEATURES

- HVLV spray gun with low operating air pressure
- Proven Split Nozzle™ Technology for increased material savings
- Ideal for general purpose use
- Quality surface for easy cleaning
- Minimal wear parts for easy maintenance
- LPH-400-LVX has a specially designed orange cap for spraying metallics, stains, and dyes.

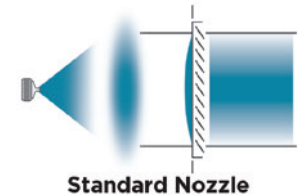
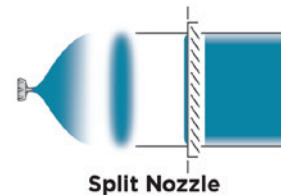
TECHNICAL



LPH-400-LV						
LPH-400-124LV	1.2	LV4 Silver	1.1/16	90	9.5	259
LPH-400-134LV	1.3			110		279
LPH-400-144LV	1.4			130		290
LPH-400-154LV	1.5			140		295
LPH-400-164LV	1.6			150		300
LPH-400-184LV	1.8			190		320
LPH-400-LVX						
LPH-400-134LVX	1.3	LVX Orange	1.1/16	120	9.8	300
LPH-400-144LVX	1.4			130		310
LPH-400-154LVX	1.5			145		330

Air Nipple: G1/4" • Fluid Nipple: M16 x 1.5mm

PROVEN SPLIT NOZZLE™ TECHNOLOGY



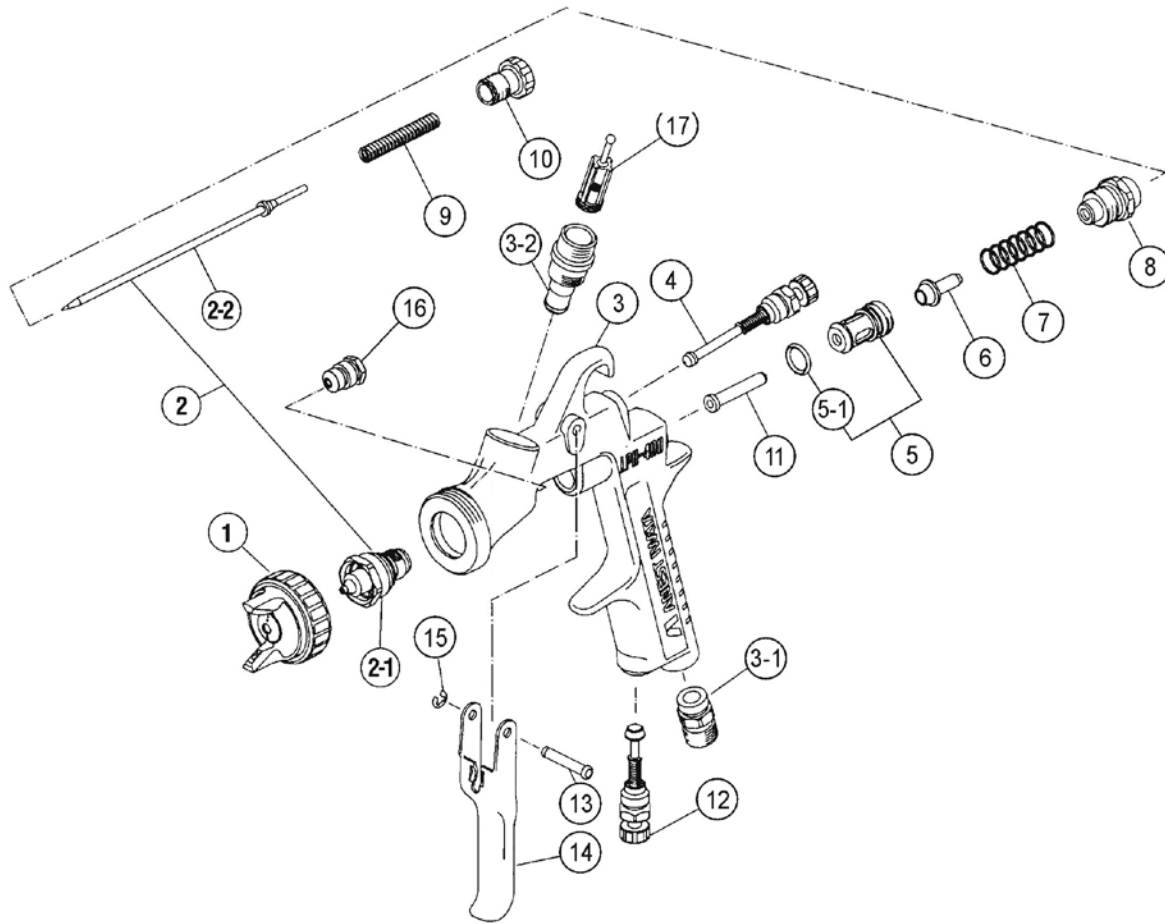
ORDER Information - LPH-400-LV

	ø 1.2	ø 1.3	ø 1.4	ø 1.5	ø 1.6	ø 1.8
GRAVITY SPRAY GUN LPH-400LV	5540	5640	5550	5535	5560	5570
GRAVITY SPRAY GUN + PCG6PM - 600ML	5541	5641	5551	5536	5561	5571
GRAVITY SPRAY GUN + PCG7EM - 700ML	5542	5642	5552	5537	5562	5572
GRAVITY SPRAY GUN + PCG10EM - 1000ML	5543	5643	5553	5538	5563	5573
NOZZLE + NEEDLE SET	93880600	93897600	93873600	93516650	93882600	93884600
AIR CAP SET (SILVER)	93874601					

ORDER Information - LPH-400-LVX

	ø 1.3	ø 1.4	ø 1.5
GRAVITY SPRAY GUN LPH-400-LVX	5660	5670	5680
GRAVITY SPRAY GUN + PCG6PM - 600ML	5661	5671	5681
GRAVITY SPRAY GUN + PCG7EM - 700ML	5662	5672	5682
GRAVITY SPRAY GUN + PCG10EM - 1000ML	5663	5673	5683
NOZZLE + NEEDLE SET	93897600	93873600	93516650
AIR CAP SET (ORANGE)	93548700		





SPARE PARTS

Ref.	Code	Description	
1		AIR CAP SET	
2		NOZZLE + NEEDLE SET	
3-1	93660300	AIR NIPPLE	1/4"
3-2	93650531	FLUID NIPPLE	M16X1.5
4	93842601	PATTERN ADJ. SET	
5	93843530	AIR VALVE SEAT SET	
5-1	96638008	O RING	
6	93591530	AIR VALVE	
7	93719530	AIR VALVE SPRING	
8	93844532	FLUID ADJUST GUIDE SET	
9	93593530	FLUID NEEDLE SPRING	
10	93594532	FLUID ADJUST KNOB	
11	93935430	AIR VALVE SHAFT	
12	93845531	AIR ADJUST SET	
13	93667360	TRIGGER STUD	
14	93517600	TRIGGER	
15	93912030	STOPPER	(2 PCS./1PK.)
16	93765610	CARTRIDGE PACKING	
17	93515500	FILTER	60 MESH

ACCESSORIES

Ref.	Code	Description
	93708240	AIR CAP PACKING (WHITE)
	93512600	AIR CAP PACKING (BLACK)
	2950	MK5 MAINTENANCE KIT
	5650	REPAIR SERVICE KIT (includes: 5-1, 7, 9, 13, 15, 16)
	2995	TEST CAP GAUGE SET "LPH100-LV4"
	2996	TEST CAP GAUGE SET "LPH100-LVB"
	2998	TEST CAP GAUGE SET "LPH100-LV4X"

W-400-LV



W-400-LV
with PCG10EM
Cup

FEATURES

- Compliant spray gun that meets EPA NESHAP 40 CFR, Part 63 Subpart 6H
- Proven Split Nozzle™ Technology for increased material savings
- Tulip inspired spray pattern
- Ideal for general purpose use
- Quality surface for easy cleaning
- Minimal wear parts for easy maintenance

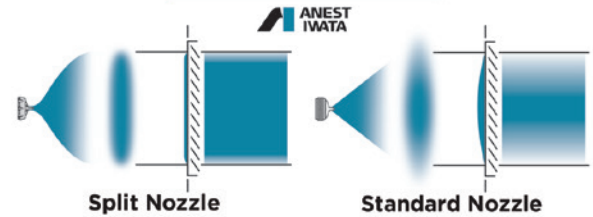
TECHNICAL



W-400-LV					
W-400LV-124G	1.2	LV4	1.4/20	100	250
W-400LV-134G	1.3			140	270
W-400LV-144G	1.4			155	290
W-400LV-164G	1.6			185	305
W-400LV-184G	1.8			235	325

• Air Nipple: G1/4" • Fluid Nipple: M16 X 1.5mm

PROVEN SPLIT NOZZLE™ TECHNOLOGY



ORDER Information - W-400-LV W/O REGULATOR

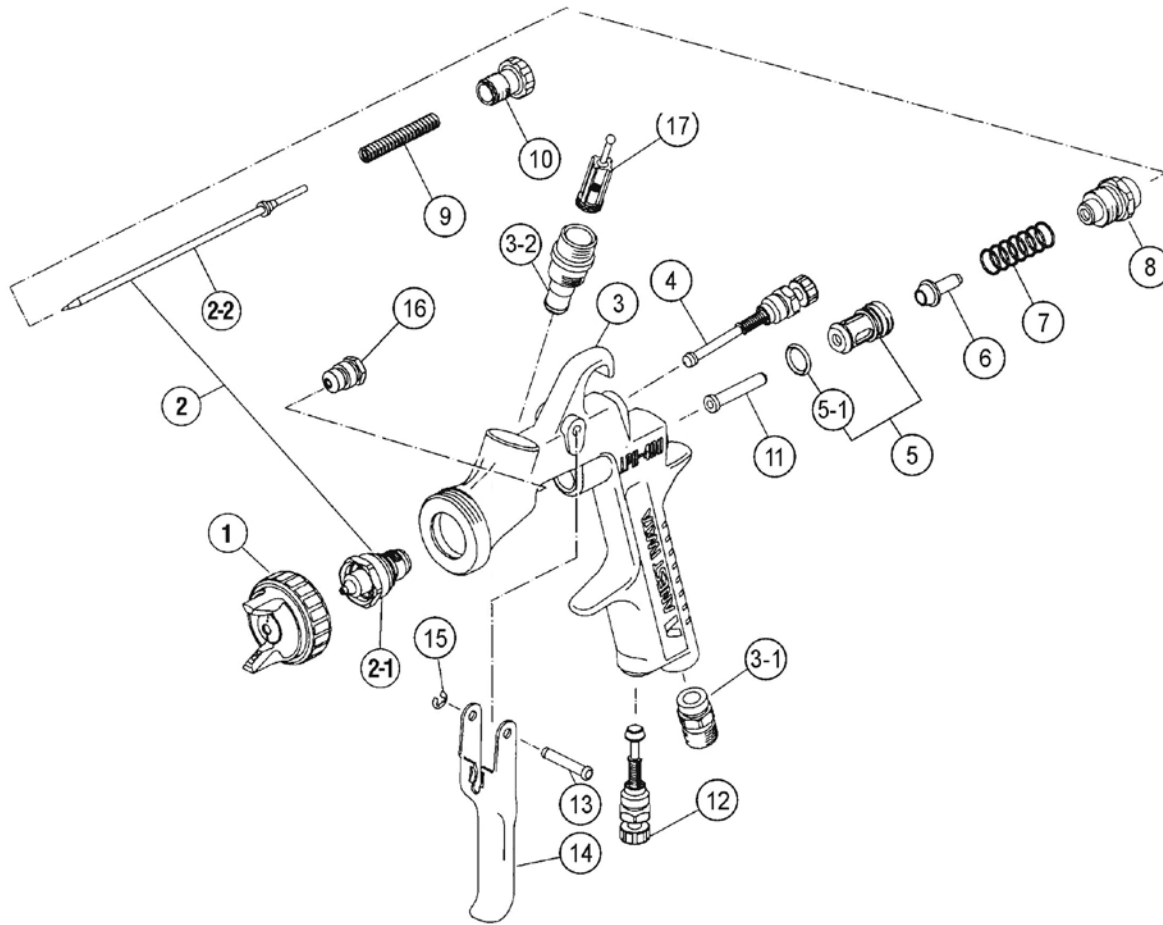
	ø 1.2	ø 1.3	ø 1.4	ø 1.6	ø 1.8
GRAVITY SPRAY GUN	4750	4755	4760	4765	4770
GRAVITY SPRAY GUN + PCG6PM - 600 ml	4751	4756	4761	4766	4771
GRAVITY SPRAY GUN + PCG7EM - 700 ml	4752	4757	4762	4767	4772
GRAVITY SPRAY GUN + PCG10EM - 1000 ml	4753	4758	4763	4768	4773
NOZZLE + NEEDLE SET	93627610	93634610	93628610	93622620	93635620
AIR CAP SET	LV4 93631621				

ORDER Information - W-400-LV W/ AK-1B2 AIR REGULATOR

	ø 1.2	ø 1.3	ø 1.4	ø 1.6	ø 1.8
GRAVITY SPRAY GUN	4775	4780	4785	4790	4795
GRAVITY SPRAY GUN + PCG6PM - 600 ml	4776	4781	4786	4791	4796
GRAVITY SPRAY GUN + PCG7EM - 700 ml	4777	4782	4787	4792	4797
GRAVITY SPRAY GUN + PCG10EM - 1000 ml	4778	4783	4788	4793	4798

ORDER Information - W-400-LV W/ AK-1R2 AIR REGULATOR

	ø 1.2	ø 1.3	ø 1.4	ø 1.6	ø 1.8
GRAVITY SPRAY GUN	4855	4860	4865	4870	4875
GRAVITY SPRAY GUN + PCG6PM - 600 ml	4856	4861	4866	4871	4876
GRAVITY SPRAY GUN + PCG7EM - 700 ml	4857	4862	4867	4872	4877
GRAVITY SPRAY GUN + PCG10EM - 1000 ml	4858	4863	4868	4873	4878



SPARE PARTS

Ref.	Code	Description	
1		AIR CAP SET	
2		NOZZLE + NEEDLE SET	
3-1	93660300	AIR NIPPLE	1/4"
3-2	93650531	FLUID NIPPLE	M16X1.5
4	93842601	PATTERN ADJ. SET	
5	93843530	AIR VALVE SEAT SET	
5-1	96638008	O RING	
6	93591530	AIR VALVE	
7	93719530	AIR VALVE SPRING	
8	93844532	FLUID ADJUST GUIDE SET	
9	93593530	FLUID NEEDLE SPRING	
10	93594532	FLUID ADJUST KNOB	
11	93935430	AIR VALVE SHAFT	
12	93845531	AIR ADJUST SET	
13	93667360	TRIGGER STUD	
14	93517600	TRIGGER	
15	93912030	STOPPER	(2 PCS./1PK.)
16	93765610	CARTRIDGE PACKING	
17	93515500	FILTER	60 MESH

ACCESSORIES

Ref.	Code	Description
	93708240	AIR CAP PACKING (WHITE)
	93512600	AIR CAP PACKING (BLACK)
	2950	MK5 MAINTENANCE KIT
	5650	REPAIR SERVICE KIT (includes: 4, 7-1, 9, 11, 15, 17)

WS-400 SERIES 2 CLEAR



FEATURES

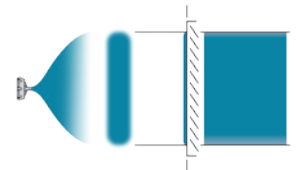
- Compliant spray gun that meets EPA NESHAP 40 CFR, Part 63 Subpart 6H
- Exclusive Split Nozzle™ 2.0 Technology for repeatable results and unmatched performance
- Ideal for a wide range of clearcoat applications
- Nozzle configurations to suit your application style and speed
- Optional DPG1 high-performance digital pressure regulator allows air adjustment convenience without disrupting the spray gun ergonomics

TECHNICAL	digital	ø mm	application speed	no.	bar/psi	m ² /min	CFM	mm/in	
	HD: HIGH DELIVERY								
WS-400-SR2D-12HD	Y	1.2 HD	CONTROL	WS-400-03	2.0/29	220	13.1	245/9.6	
WS-400-SR2-12HD			STANDARD					245	250/9.8
WS-400-SR2D-13HD	Y	1.3 HD	SPEED					260	255/10.0
WS-400-SR2D-14HD	Y	1.4 HD	HIGH SPEED					280	260/10.2
WS-400-SR2-14HD									
WS-400-SR2D-15HD	Y	1.5 HD							
WS-400-SR2-15HD									

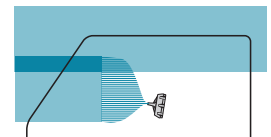
Air Nipple: G1/4" • Fluid Nipple: G1/4"



SERIES 2 EXCLUSIVE SPLIT NOZZLE™ 2.0



Optimized ANEST IWATA Fan Pattern



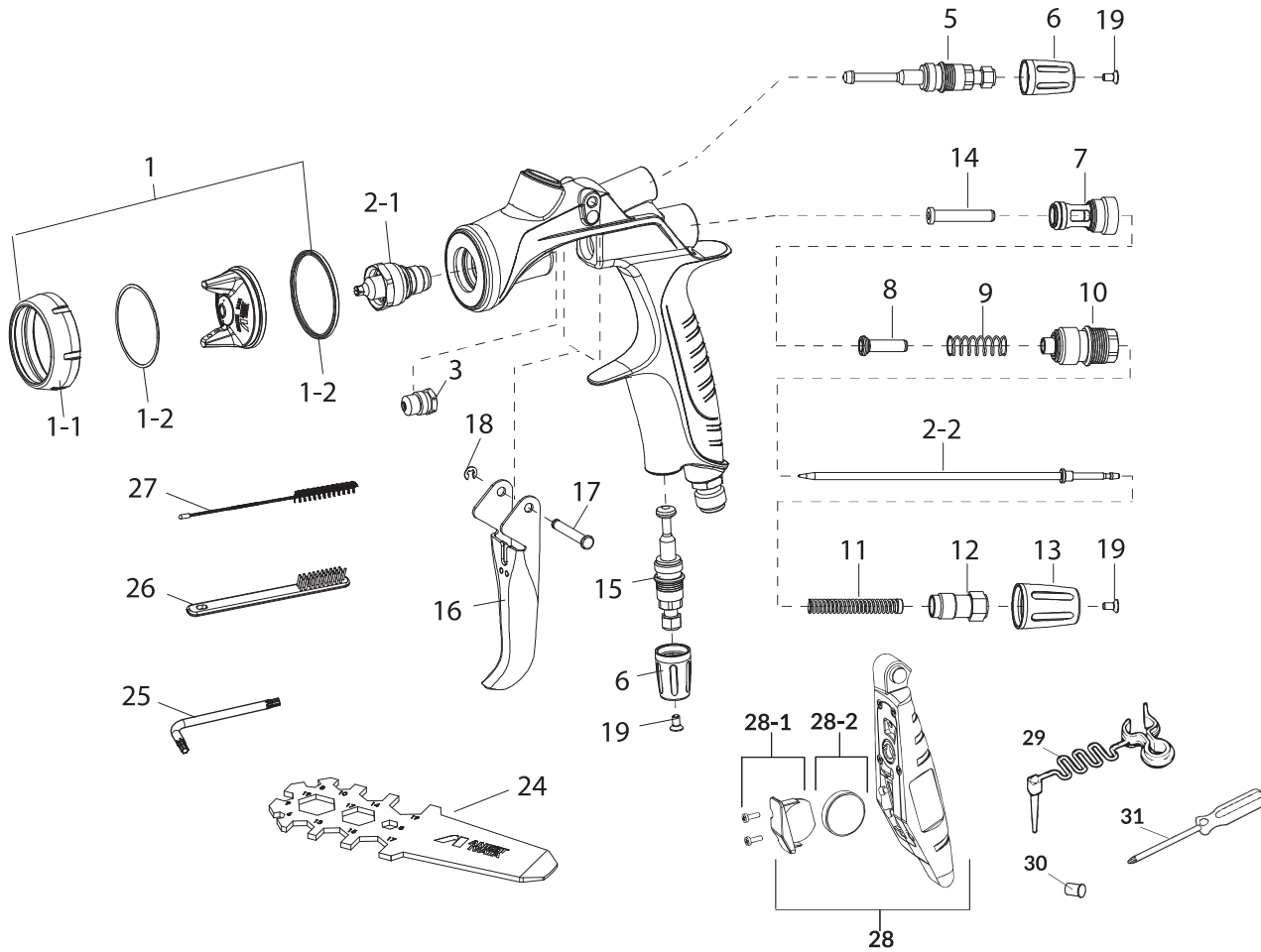
50-15% overlap

ORDER Information

	1.2 HD	1.3 HD	1.4 HD	1.5 HD
DIGITAL GRAVITY SPRAY GUN	2712D	2713D	2714D	2715D
NON-DIGITAL GRAVITY SPRAY GUN	2712	2713	2714	2715
NOZZLE + NEEDLE SET	93009140	93009060	93009160	93009180
AIR CAP SET	WS-400-03 93009030			



WS-400 SERIES 2 CLEAR



SPARE PARTS

Ref.	Code	Description	Qty.
1	93009030	AIR CAP SET 03	
1-1	93009050	AIR CAP RING (GREY)	
1-2	93018310	PACKING SET	2
2.1+2.2	93009140	NOZZLE NEEDLE SET 1.2 HD	
2.1+2.2	93009060	NOZZLE NEEDLE SET 1.3 HD	
2.1+2.2	93009160	NOZZLE NEEDLE SET 1.4 HD	
2.1+2.2	93009180	NOZZLE NEEDLE SET 1.5 HD	
3	93810620	NEEDLE PACKING ASSY	
3	93001410	SELF ADJUSTING NEEDLE PACKING (OPTIONAL)	
5	93008420	PATTERN ADJ. ASSY	
6	93009120	PATTERN ADJ. KNOB (GREY)	
7	93001640	AIR VALVE SEAT ASSY	
8	93001690	AIR VALVE	
9	93001700	AIR VALVE SPRING	
10	93008840	FLUID ADJ. GUIDE ASSY	
11	93002820	FLUID NEEDLE SPRING ASSY	
12	93505823	FLUID ADJ. SCREW	
13	93009130	FLUID ADJ. KNOB (GREY)	
14	93001790	AIR VALVE SHAFT	

Ref.	Code	Description	Qty.
15	93008872	AIR ADJ. ASSY	
16	93008890	TRIGGER	
17	93505860	TRIGGER STUD	
18	96612025	E STOPPER	
19	93512741	TORX SOCKET COUNTERSUNK HEAD SCREWS	
24	93538600	UNIVERSAL SPANNER	
25	03506480K	ALLEN WRENCH SET	3
26	W2COM6163	BRUSHES	5
27	W2COM6162	TWISTED BRUSH Ø10MM	5
28	930114A0	DPG-1 PSI	
28-1	930325A0	BATTERY HOLDER SPARE KIT	
28-2	930083A0	BATTERY	
29	930357A0	TRIGGER LOCKING CLIP	
30	930366A0	PLUGS	5
31	960024A0	SCREWDRIVER	

ACCESSORIES

Ref.	Code	Description
	5656	REPAIR SERVICE KIT (7, 9, 11, 14, 10, 17, 18, & 3)

WS-400HD SUPERNOVA EVOTECH

DISCONTINUED 2025

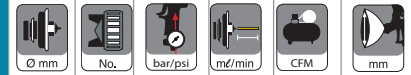


WS-400HD
SUPERNOVA
with PCG7D2 Cup

FEATURES

- Compliant spray gun that meets EPA NESHAP 40 CFR, Part 63 Subpart 6H
- Proven Split Nozzle™ Technology for increased material savings
- Concentrated fine atomization
- Large fan tulip pattern
- Standard for clear coats
- Fast application speed
- Superior transfer efficiency

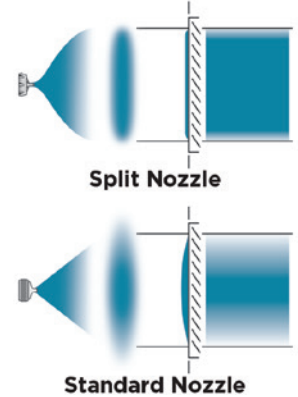
TECHNICAL



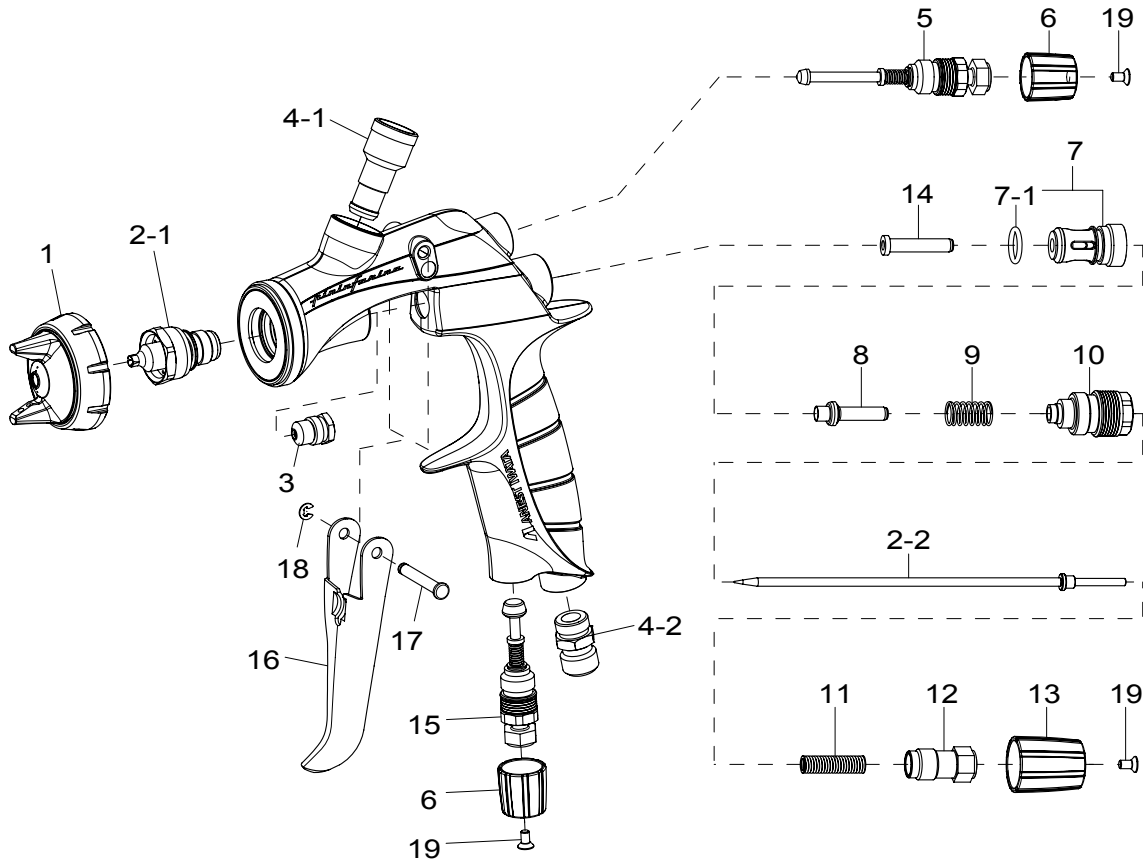
WS-400HD						
WS-400-1201HD	1.2	01	2.0/29	200	13	350
WS-400-1301HD	1.3			220		365
WS-400-1401HD	1.4			240		370
WS-400-1501HD	1.5			260		365
WS-400-OBS13	1.3			160		

• Air Nipple: G1/4" • Fluid Nipple: G1/4"

PROVEN
SPLIT NOZZLE™
TECHNOLOGY



WS-400HD SUPERNOVA EVOTECH



SPARE PARTS

Ref.	Code	Description	Qty.
1	93505300	AIR CAP SET WS-400-01	
2.1+2.2	93505880	ø 1.2HD NOZZLE + NEEDLE SET	
2.1+2.2	93506850	ø 1.3(OBS) NOZZLE + NEEDLE SET	
2.1+2.2	93506910	ø 1.3HD NOZZLE + NEEDLE SET	
2.1+2.2	93506920	ø 1.4HD NOZZLE + NEEDLE SET	
2.1+2.2	93506930	ø 1.5HD NOZZLE + NEEDLE SET	
3	93765610	CARTRIDGE PACKING	
4-1	93505421	FLUID NIPPLE	1/4"
4-2	93660300	AIR NIPPLE	1/4"
5	93505432	PATTERN ADJUST SET	
6	93505471	ADJUST KNOB	SILVER
7	93843530	AIR VALVE SEAT SET	
7-1	96638008	O RING	
8	93505480	AIR VALVE	
9	93719530	AIR VALVE SPRING	
10	93505492	FLUID ADJUST GUIDE SET	
11	93593530	FLUID NEEDLE SPRING	
12	93505822	FLUID ADJ. SCREW SET	
13	93505831	FLUID ADJUST KNOB	SILVER
14	93935430	AIR VALVE SHAFT	
15	93505842	AIR ADJUST SET	

Ref.	Code	Description	Qty.
16	93505850	TRIGGER	
17	93505860	TRIGGER STUD	
18	96612025	E STOPPER	
19	93506970	TORQUE SCREW	

ACCESSORIES

Ref.	Code	Description
	93505341	AIR CAP GASKET (BLACK)
	93505330	AIR CAP GASKET (WHITE)
	5652	REPAIR SERVICE KIT (Includes: 3, 7, 9, 11, 17, & 18)

LPH-80

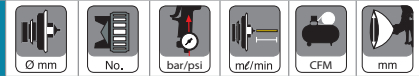


LPH-80
with
PCG2D-1
Cup

FEATURES

- HVLP spray gun with low operating air pressure
- Perfect for spot repair and touch-up as well as coating hard to reach areas
- Very fine atomization with low air consumption
- Extremely low material consumption
- Perfect handling when blending
- One of the most lightweight spot repair guns on the market
- Simple operation of the control knobs for both right and left handers
- Conical seal nozzle, minimum wear parts
- Easy maintenance
- Quality surface for easy cleaning
- Recommended for UV primers and ceramic coatings

TECHNICAL



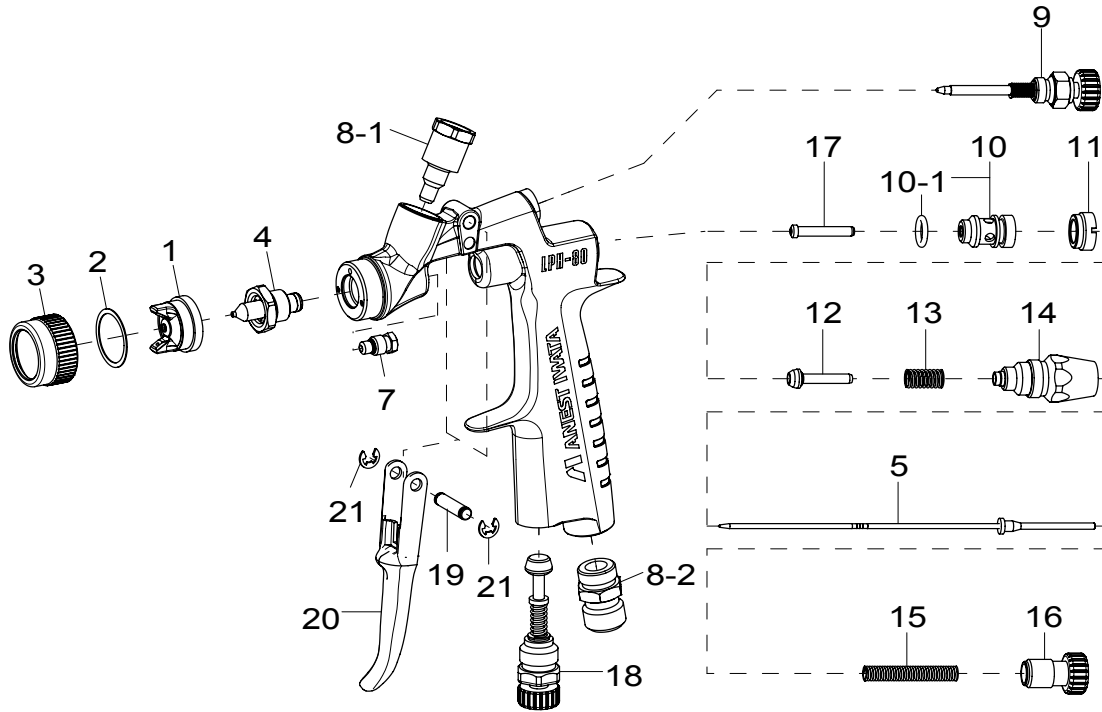
LPH-80						
Model	Ø mm	No.	bar/psi	m³/min	CFM	mm
LPH-80-042G	0.4	E2	1.0/13	8	1.8	40
LPH-80-062G	0.6			25		60
LPH-80-082G	0.8			45		80
LPH-80-102G	1.0			55		100
LPH-80-122G	1.2			80		120
LPH-80-104G (WIDE FAN)	1.0	E4	1.0/14	60	2.2	130
LPH-80-124G (WIDE FAN)	1.2			75		140
LPH-80-ST2						
LPH-80-ST2	1.0	-	1.0/14	-	-	-

Air Nipple: G1/4" • Fluid Nipple: G1/8"

ORDER Information - LPH-80

	Ø 0.4	Ø 0.6	Ø 0.8	Ø 1.0 (E2)	Ø 1.2 (E2)	Ø 1.0 (E4)	Ø 1.2 (E4)
GRAVITY SPRAY GUN LPH-80	4900	4905	4910	4915	4920	4925	4930
GRAVITY SPRAY GUN + PCG2D-1 - 150ML	4901	4906	4911	4916	4921	4926	4931
AIR CAP SET	93557600					93662600	
NEEDLE SET	93891600	93890600		93886600			
FLUID NOZZLE	93570600	93568600	93761530	93560600	93760530	93560600	93760530





SPARE PARTS

Ref.	Code	Description	
1	93557600	AIR CAP SET	E2
1	93662600	AIR CAP SET	E4
2	93558600	AIR CAP GASKET	
3	93559600	AIR CAP COVER RING	
4		NOZZLE SET	
5		NEEDLE SET	
7	93940890	NEEDLE PACKING CARTRIDGE	
8-1	93753530	FLUID NIPPLE	1/8" BSP
8-2	93660300	AIR NIPPLE	1/4"
9	93748530	PATTERN ADJ. SET	
10	93912880	AIR VALVE SEAT SET	
10-1	96638005	O RING	
11	93011880	AIR VALVE SEAT SCREW	
12	93013881	AIR VALVE	
13	93012880	AIR VALVE SPRING	
14	93936880	FLUID ADJ. GUIDE SET	
15	93015880	FLUID NEEDLE SPRING	
16	93754530	FLUID ADJ. KNOB	
17	93006880	AIR VALVE SHAFT	
18	93845531	AIR ADJ. SET	
19	93167890	TRIGGER STUD	
20	93162890	TRIGGER	
21	93912030	E STOPPER	2 pcs./1 pk.

ACCESSORIES

Ref.	Code	Description
	2950	MK5 MAINTENANCE KIT
	2860	REPAIR SERVICE KIT (includes: 7, 10-1, 21)
	2981	TEST CAP GAUGE SET "E2" (042G/062G/082G/102G/122G)
	2982	TEST CAP GAUGE SET "E4" (104G/124G)

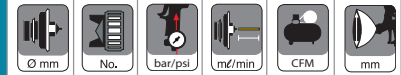
AIR GUNSA AZ3 HTE-S IMPACT



FEATURES

- HVLP spray gun with low operating air pressure
- High quality filler spray gun
- Flat and thin spray pattern with fine atomization
- All fluid passages are in stainless steel
- Simple operation of the control knobs, for right and left handers
- Costs for spare parts replacement extremely customer friendly

TECHNICAL



AZ3 HTE-S IMPACT HVLP

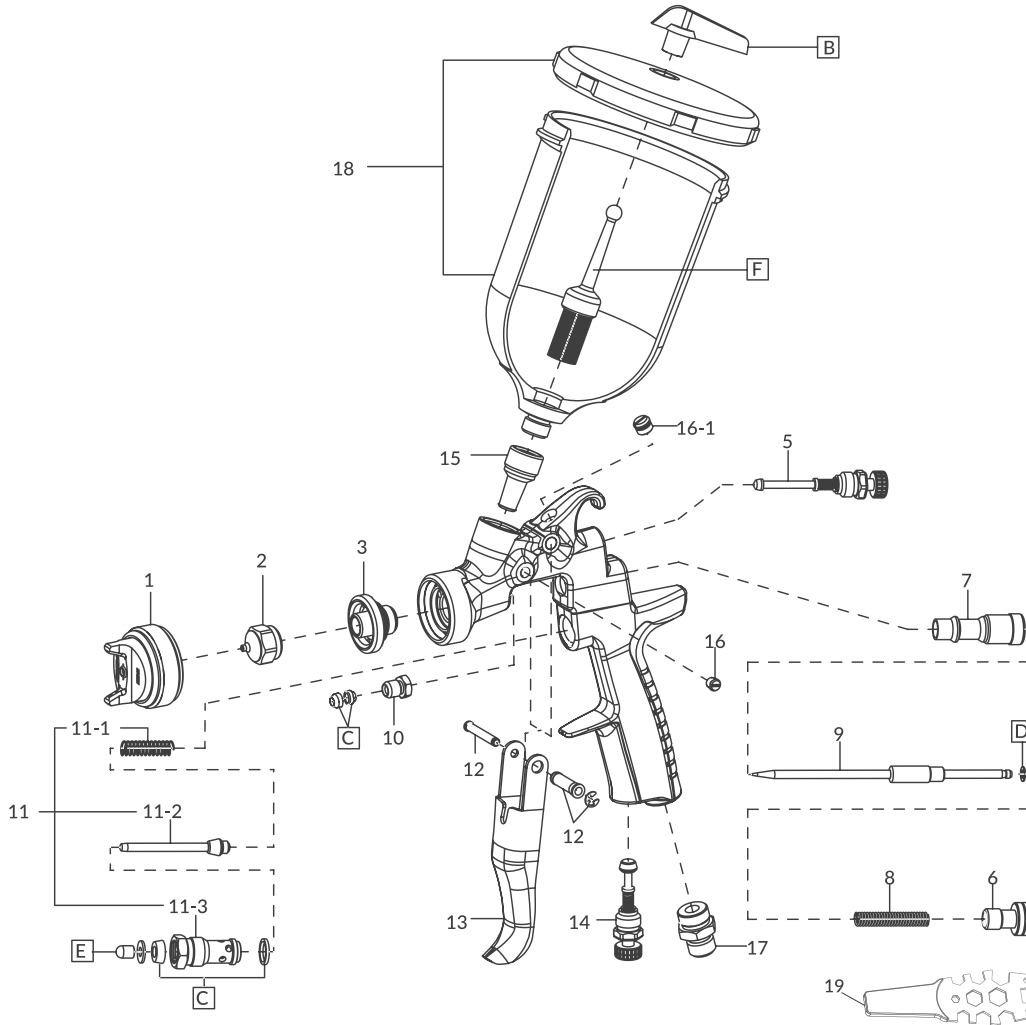
	1.3		1.8	307	5.7	
	1.4	HVL P 1			6.2	300
AZ3 HTE-S IMPACT HVLP	1.5				6.7	320
	1.6				3.2	260
	1.8	HVL P 2	2.1	369	3.5	280
	2.0				3.9	300

• Air Nipple: G1/4" • Fluid Nipple: G1/4"

ORDER Information - AZ3 HTE-S IMPACT W/ 600ml CUP

	ø 1.3	ø 1.4	ø 1.5	ø 1.6	ø 1.8	ø 2.0
GRAVITY SPRAY GUN + PCG-6P-2-AZ - 600 ml	9270	9274	9271	9275	9272	9273
NOZZLE + NEEDLE SET	9280	9286	9281	9287	9282	9283
AIR CAP SET		9284			9285	

AIR GUNSA AZ3 HTE-S IMPACT



SPARE PARTS

Ref.	Code	Description	Qty.
1		AIR CAP SET	
2+9		FLUID NOZZLE + FLUID NEEDLE SET	
3	9901	NOZZLE HOLDER	
5	93842601	PATTERN ADJ. SET	
6	9913	FLUID NEEDLE ADJ. KNOB	
7	9135	FLUID NEEDLE GUIDE	
8	9155B	FLUID NEEDLE SPRING	
10	9134	FLUID NEEDLE PACKING NUT	
11	9211	AIR VALVE SET	
11-1	9156B	AIR VALVE SPRING	
11-2	9146B	AIR VALVE	
11-3	9148	AIR VALVE SEAT	
12	9914	TRIGGER STUD	
13	9256	TRIGGER	
14	93845531	AIR ADJ. SET	
15	9902	THREADED BUSHING	
16	9196	SCREW	
16-1	9257	PLUG	
17	9915	AIR NIPPLE	
C	9166	PACKING SET	(3 pcs./1 pk.)
D	9259	SLIDE RING SET	(10 pcs./1 pk.)
E	9916	AIR VALVE SHAFT TIP SET	(3 pcs./1 pk.)

Ref.	Code	Description	Qty.
18	9290	PCG-6P-2-AZ GRAVITY CUP 600 ml	
B	9164	NON DRIP SET	(5 pcs./1 pk.)
F	9167	FILTER SET 50 MESH (297µ)	(5 pcs./1 pk.)
19	9912	UNIVERSAL SPANNER	

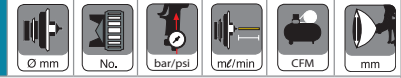
AIR GUNSA AZ3 HV-2 HVLP



FEATURES

- HVLP spray gun with low operating air pressure
- Robust spray gun
- Flat and thin spray pattern with a fine atomization
- All wetted parts in stainless steel
- Replacement parts available
- O-Ring Kit Part #9166

TECHNICAL



AZ3 HV-2 HVLP						
AZ3HV2-13GC	1.3	HVLP	2.0/30	150	11.0	340
AZ3HV2-15GC	1.5			185	11.4	
AZ3HV2-18GC	1.8			215	13.4	
AZ3HV2-20GC	2.0			240	14.2	



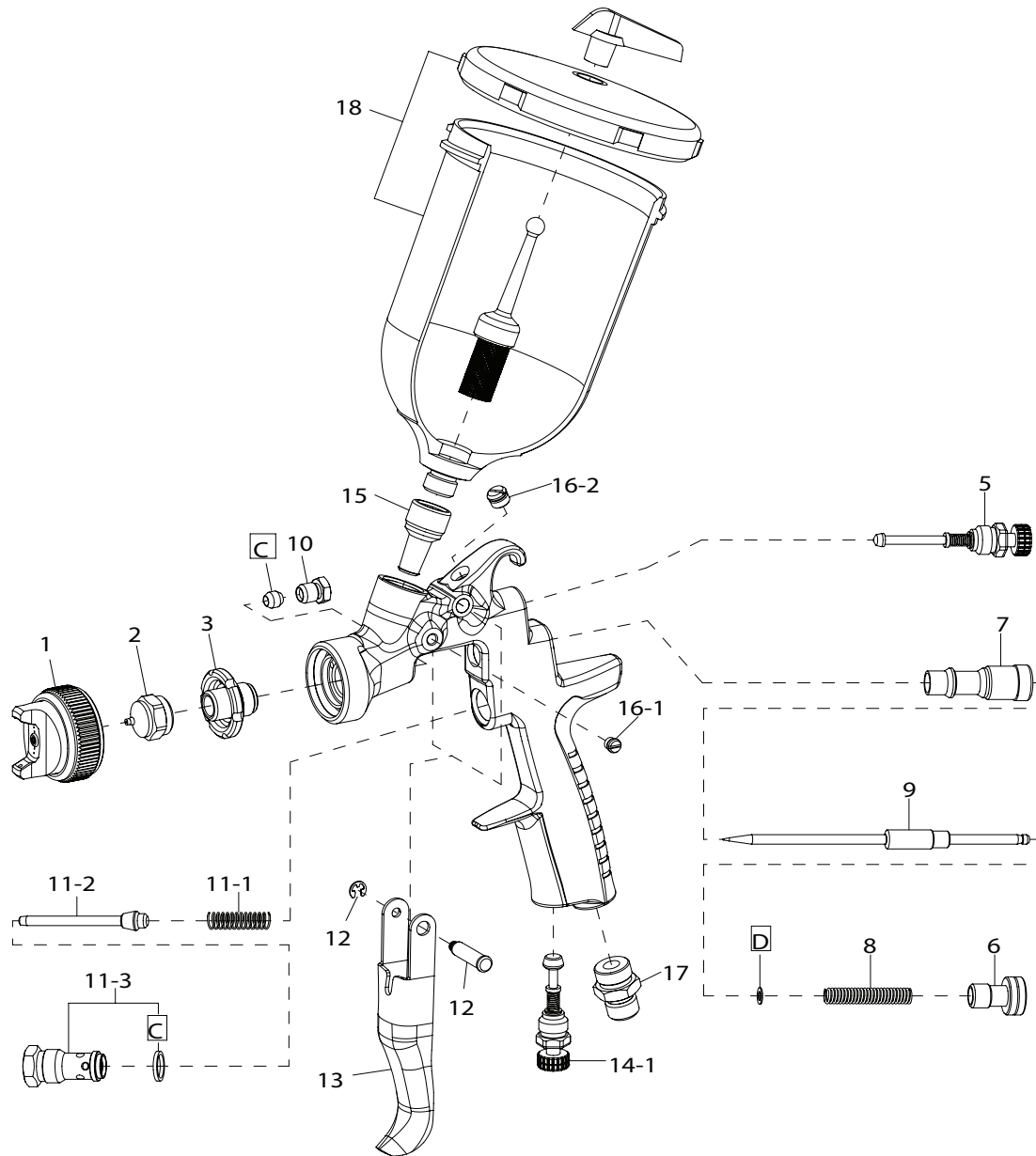
Air Gunsa HVLP Gravity Spray Gun Kit
Part #9276

ORDER Information - AZ3 HV-2 HVLP W/ 600ml CUP

	ø 1.3	ø 1.5	ø 1.8	ø 2.0
GRAVITY SPRAY GUN + PCG6PM - 600 ml	9230	9231	9232	9233
NOZZLE + NEEDLE SET	9173	9152	9153	9154
AIR CAP SET	9254			



AIR GUNSA AZ3 HV-2 HVLP



SPARE PARTS

Ref.	Code	Description	Qty.
1		AIR CAP SET	
2+9		NOZZLE + NEEDLE SET	
3	9193	NOZZLE HOLDER	
5	93842601	PATTERN ADJ. SET	
6	9145B	FLUID NEEDLE ADJ. KNOB	
7	9135	FLUID NEEDLE GUIDE	
8	9155B	FLUID NEEDLE SPRING	
10	9134	FLUID NEEDLE PACKING NUT	
11	9211	AIR VALVE SET	
11-1	9156B	AIR VALVE SPRING	
11-2	9146-B	AIR VALVE SHAFT	

Ref.	Code	Description	Qty.
11-3	9148	AIR VALVE SEAT	
12	9133	TRIGGER STUD	
13	9256	TRIGGER	
14-1	93845531	AIR ADJ. SET	
14-2	93625370	PLUG	
15	9195	THREADED BUSHING	
16-1	9196	SCREW	
16-2	9257	PLUG	
17	9213	AIR NIPPLE	
C	9166	PACKING SET	(3 pcs./1 pk.)
18	9131	600ml CUP SET	







KATANA PLUS - AN AIRREX PRODUCT BY ANEST IWATA



FEATURES

- HVLP spray gun with low operating air pressure
- Entry level spray gun that sprays water-based, solvent-based and oil-based coatings
- Includes a comprehensive, easy-to-follow spray guide plus accessories
- Works with an 1 HP or larger air compressor
- Gives the first-time user the tools and confidence to successfully tackle a variety of projects
- No replacement parts available

TECHNICAL

	 Ø mm	 No.	 bar/psi	 ml/min	 CFM	 mm/in
KAT9000	1.3	KTN 13 HVLP	1.4/20	155	8.48	140/5.5

Air Nipple: G1/4 (NPS1/4) • Fluid Nipple: G1/4 (NPS1/4)



ORDER Information

KATANA PLUS HVLP SPRAY GUN

Katana Plus 1.3 HVLP Spray Gun, 600 ml Plastic Gravity Cup, Spray Guide, 5 Paint Strainers, Cleaning Brush, Thread Sealant Tape, Viscosity Cup and Gun Wrench

ø 1.3

KAT9000



FAST FLOW SYSTEM SEALED SPRAY CUPS



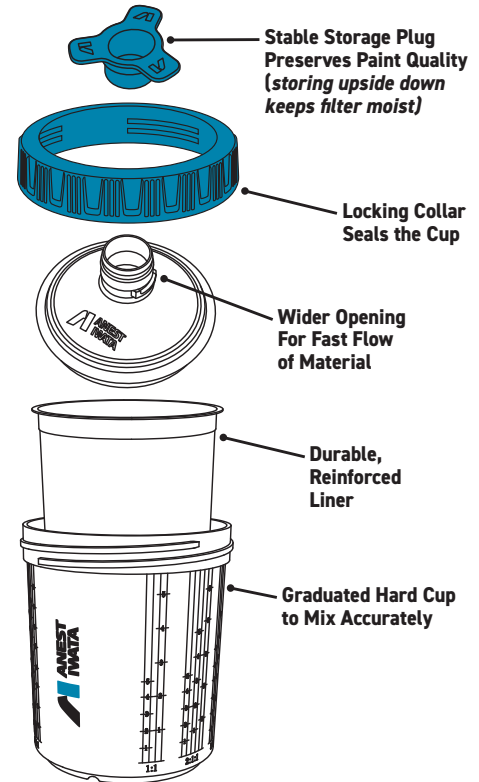
Measure, mix, filter, spray and store all in one container. There's no need for multiple cups or messy clean-up.

The ANEST IWATA Fast Flow System Sealed Spray Cup gives you an enhanced painting experience. Engineered for effortless use and material savings, the FFS Cup offers quick, easy paint preparation and clean-up, saving you money, time and materials.

The FFS Spray Cup features a wider lid opening, allowing for a smooth fast flow of material.

The durable, reinforced liner minimizes the risk of puncturing while mixing and ensures a tight fit to prevent leaking while spraying.

The stable storage plug allows you to invert your cup when temporarily storing your paint to ensure the filter remains moist, preserving the quality of your paint and minimizing waste.



ORDER Information

	400ml/13oz, 125µ	650ml/22oz, 125µ	650ml/22oz, 200µ	850ml/29oz, 125µ
ANEST IWATA FFS SEALED SPRAY CUP KIT 50 Lids with Filters, 50 Liners, 1 Hard Cup, 20 Storage Plugs, 1 Locking Collar	27501	27502	27503	27504

FFS ADAPTERS FOR ANEST IWATA GUNS

TYPES	LS-400 Series 2 Base	WS-400 Series 2 Base	WS-400 Series 2 Clear	LS-400 SUPERNOVA	WS-400 SUPERNOVA	W-400	LPH-400	LPH-300	LPH-80	Air Guns AZ3HTE-S IMPACT	Air Guns AZ3 HV-2	Air Guns AZ3HTE-2	Katana Plus
I-10 27520	•	•	•	•	•			•		•	•	•	•
I-12 27530						•	•						
I-13 27540									•				

FOR MANUAL SPRAY GUNS

ALUMINUM GRAVITY CUPS			LS-400 Series 2 Base	WS-400 Series 2 Base	WS-400 Series 2 Clear	W-400	W-400-LV	W-400-LV-WBX	LPH-400	LPH-300-LV	LPH-80
MODELS											
1000ML		PCG10D2									
		6038D	•	•	•						
		G1/4" Stainless Steel Fluid Joint									
1000ML		PCG10EM									
		6034E				•	•	•	•		
		M16x1.5 Female Stainless Steel Fluid Joint									
700ML		PCG7D2									
		6032D	•	•	•					•	
		G1/4" Stainless Steel Fluid Joint									
700ML		PCG7EM									
		6033E				•	•	•	•		
		M16x1.5 Female Stainless Steel Fluid Joint									
400ML		PCG4D2									
		6031D	•	•	•					•	
		G1/4" Stainless Steel									
150ML		PCG2D-1									
		6036D	•*	•*	•*	•**	•**	•**	•**	•*	•
		G1/8" Stainless Steel									
70ML		PCG1D-1									
		6050	•*	•*	•*	•**	•**	•**	•**	•*	•
		G1/8" Stainless Steel									

*Requires Adaptor Part #6051
**Requires Adaptor Part #6052

CODE	SPARE PARTS for ALUMINUM GRAVITY CUPS	MODELS
94008321	LID	PCG10/7/4/2
94007321	LID	PCG2

AIR REGULATORS

AK-1R2 Air Regulator Part #8131B

- Self-purging for consistent pressure and optimal performance
- Solvent resistant seals and o-rings
- Adjust range 0-60 psi



AK-1B2 Air Regulator Part # 8130B

- Compact size
- Quality glass gauge
- Adjust range 0-100 psi







SIDE GRAVITY CUPS			W-101	W-200	W-77	W-71	LPH-101	LPH-50	RG3L	WIDER1	WIDER2	WIDER1L
MODELS												
250ML		PC 5										
		6009	•			•	•	•	•	•		•
		G1/4" Stainless Steel										
220ML		PC 51										
		6028	•			•	•	•	•			•
		G1/4" Stainless Steel										
130ML		PC 61										
		6010	•			•	•	•	•			•
		G1/4" Stainless Steel										
400ML		PC 4										
		6007		•	•							•
		G3/8" Stainless Steel										
400ML		PC 4S										
		6008	•			•	•	•	•	•		•
		G1/4" Stainless Steel										
600ML		PCG6P2										
		6011	•			•	•					
		G1/4" Plastic										
600ML		PCG6P3										
		6012		•	•							•
		G3/8" Plastic										
CODE	SPARE PARTS for SIDE GRAVITY CUPS		MODELS									
94001080	LID SET		PC 4 - PC 4S									
94001100	LID SET		PC 5									
94001191	LID SET		PC 61									

CUPS & CONTAINERS



FOR MANUAL SPRAY GUNS

PLASTIC GRAVITY CUPS			LS-400 Series 2 Base	WS-400 Series 2 Base	WS-400 Series 2 Clear	LS-400	WS-400	W-400	W-400-LV	W-400-LV-WBX	LPH-400	LPH-300	LPH-80	
MODELS														
70ML		WOCUPAZ5IN												
		9169											•	
		G1/8" Fluid Joint												
250ML		VPE250												
		9201											•	
		G1/8" Fluid Joint												
600ML		PCG600P-2												
		6039	•	•	•	•	•					•		
		1/4" Fluid Joint												
		PCG6PM												
		6000							•	•	•	•		
		M16 X 1.5MM Fluid Joint												

CODE	SPARE PARTS for PLASTIC GRAVITY CUPS	MODELS
94002321	LID	PCG6PM/2/3
94003320	VENT KNOB	PCG6PM/2/23



SIPHON CONTAINERS			W-101	W-200	W-77	W-71	LPH-101	WIDER1	WIDER2	WIDER1L
MODELS										
1000ML		PC 1								
		6001		•	•					
		G3/8"								
1000ML		PC 1S								
		6004	•			•	•			•
		G1/4"								
600ML		PC 2								
		6005	•			•	•			•
		G1/4"								
400ML		PC 3								
		6006	•			•	•			•
		G1/4"								
700ML		PCL 7B 2								
		6019	•			•	•	•		•
		G1/4"								
700ML		PCL 7B 3								
		6021		•	•				•	
		G3/8"								
1000ML		PCL 10B 2								
		6015	•			•	•	•		•
		G1/4"								
1000ML		PCL 10B 3								
		6017		•	•				•	
		G3/8"								
CODE	SPARE PARTS for SIPHON CONTAINER		MODELS							
94901000	PACKING SET (2 pcs./1pk.)		PC 1- PC 1S - PC 2							
94008300	LID PACKING SET (2 pcs./1pk.)		PCL 7B -PCL 10B							
04904302	NON DRIP SET (2 pcs./1pk.)		PCL 7B -PCL 10B							

FOR LOW PRESSURE APPLICATIONS

ORDER Information - EAHU6 (6mm) URETHANE GROUNDED AIR HOSE							
Code	Length (ft.)	Diameter (mm)	Fitting Size (in)	Fittings Included	Compatability	Material	Note
8002	1	6	1/4	-	Can be used with all pressure fed guns, pumps, and pots EXCEPT WIDER1/WIDER1L	Urethane	For one 18' hose, order 8002 Qty. 18
8000	6			PJU02F			-
9000	6			NPT			-
8091-12	12			PJU02F			-
8091	25			PJU02F			-
8091-50	50			PJU02F			-
9091	25			NPT			-
8001	328			-			Full Roll

ORDER Information - EAHU8 (8.7mm) URETHANE GROUNDED AIR HOSE							
Code	Length (ft.)	Diameter (mm)	Fitting Size (in)	Fittings Included	Compatability	Material	Note
8114	1	8.7	1/4	-	Can be used with all pressure fed guns, pumps, and pots EXCEPT WIDER1/WIDER1L	Urethane	For one 18' hose, order 8114 Qty. 18
8220	6			W/AJU032F			-
8221	25			W/AJU032F			-
8116	328			-			Full Roll

ORDER Information - PHU6 (6mm) URETHANE FLUID HOSE							
Code	Length (ft.)	Diameter (mm)	Fitting Size (in)	Fittings Included	Compatability	Material	Note
8009	1	6	3/8	-	Can be used with all pressure fed guns, pumps, and pots EXCEPT WIDER1/WIDER1L	Urethane	For one 18' hose, order 8002 Qty. 18
8007	6			W/PJU023F			-
9007	6			NPT			-
8048	25			W/PJU023F			-
9048	25			NPT			-
8008	328			-			Full Roll



WS-200 SERIES



WS-200 SP



WS-200 FT

FEATURES

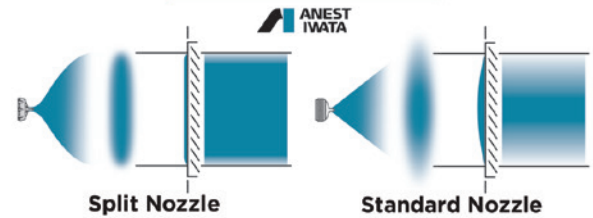
- Available with proven Split Nozzle™ Technology for increased material savings
- Unmatched transfer efficiency
- Lightweight, ergonomic design
- Produces a high quality finish
- Forged aluminum body with stainless steel fluid passages for durability
- Ease of maintenance

TECHNICAL

	ø mm	no.	bar/psi	mℓ/min	CFM	mm/in
WS-200 SP PRESSURE - SPLIT NOZZLE TECHNOLOGY						
WS-200SP-0801	0.8	WS-200SP-01	2.5/36	15.3	200	210/8.3
WS-200SP-1001	1.0					230/9.1
WS-200SP-1201	1.2					240/9.4
WS-200SP-1401	1.4					240/9.4
WS-200SP-1601	1.6					255/10.0
WS-200SP-1801	1.8					265/10.4
WS-200 FT PRESSURE - FLAT NOZZLE						
WS-200FT-0802	0.8	WS-200FT-02	3.0/43	16.7	200	215/8.5
WS-200FT-1002	1.0					250/9.8
WS-200FT-1202	1.2					255/10.0
WS-200FT-1402	1.4					255/10.0
WS-200FT-1602	1.6					270/10.6
WS-200FT-1802	1.8					285/11.2

Air nipple: G1/4" and fluid nipple: fixed G3/8"

PROVEN SPLIT NOZZLE™ TECHNOLOGY

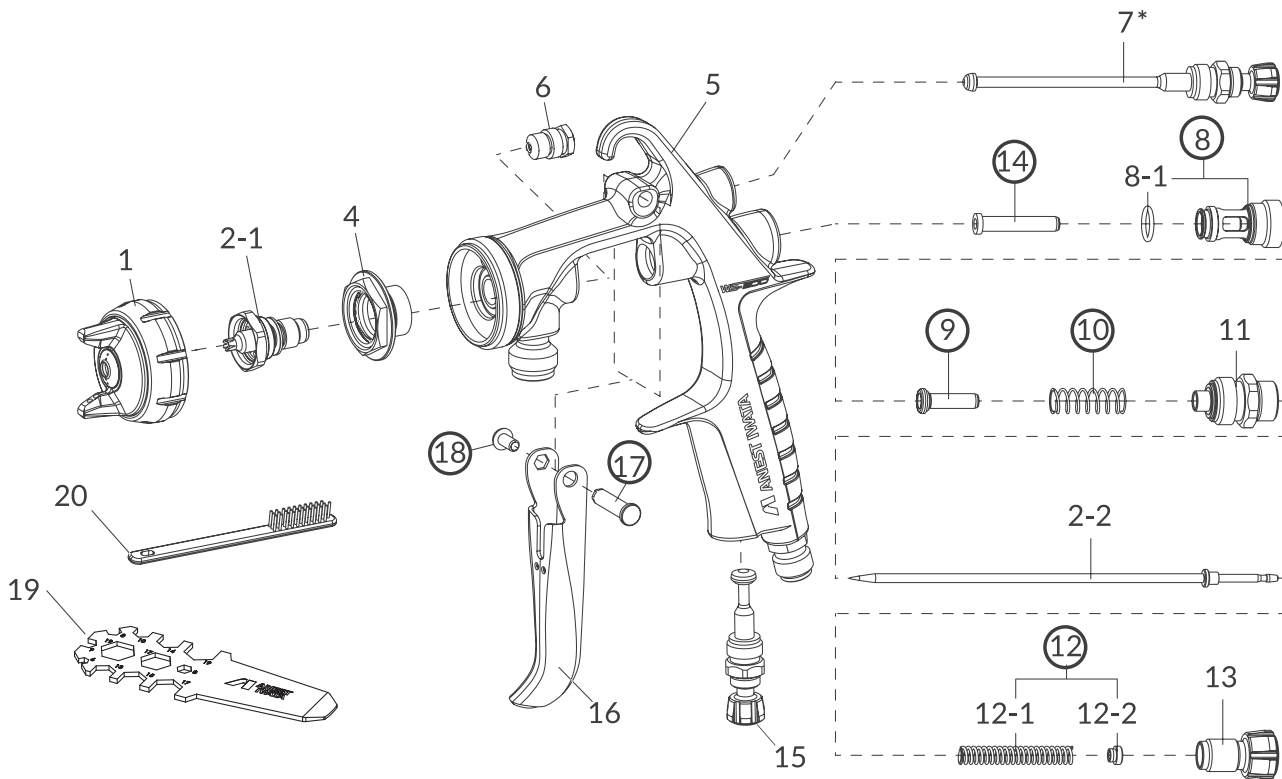


ORDER Information - WS-200 SP - Split Nozzle Technology

	ø 0.8	ø 1.0	ø 1.2	ø 1.4	ø 1.6	ø 1.8
WS-200 SP PRESSURE SPRAY GUN	4691	4690	4695	4696	4697	4698
NOZZLE + NEEDLE SET	93007240	93007490	93007550	93007620	93007650	93003690
AIR CAP SET	WS-200 SP-01 93001300					

ORDER Information - WS-200 FT - Flat Tip Nozzle

	ø 0.8	ø 1.0	ø 1.2	ø 1.4	ø 1.6	ø 1.8
WS-200 FT PRESSURE SPRAY GUN	4594	4595	4596	4597	4598	4599
NOZZLE + NEEDLE SET	93002180	93002150	93002130	93003420	93003480	93003500
AIR CAP SET	WS-200 FT-02 93002190					



SPARE PARTS

Ref.	Code	Description
1	see left	AIR CAP SET WS-200SP-01
1	see left	AIR CAP SET WS-200FT-01 and WS-200FT-02
2-1 + 2-2	see left	FLUID NOZZLE + NEEDLE SET WS-200SP
2-1 + 2-2	see left	FLUID NOZZLE + NEEDLE SET WS-200FT
4	93007750	BAFFLE RING SET (BAFFLE RING + PACKING)
6	93765610	NEEDLE PACKING SET
7	93001561	PATTERN ADJUSTMENT
8	93001640	AIR VALVE SEAT SET
8-1	93001680	O RING
9	93001690	AIR VALVE
10	93001700	AIR VALVE SPRING
11	93001710	FLUID ADJUSTMENT GUIDE SET

Ref.	Code	Description
12	93002820	NEEDLE SPRING SET
12-1	93593530	FLUID NEEDLE SPRING
12-2	93001760	NEEDLE SPRING PACKING
13	93001780	FLUID ADJUSTMENT KNOB
14	93001790	AIR VALVE SHAFT
15	93001801	AIR ADJUSTMENT SET
16	93001820	TRIGGER SET
17	93001870	TRIGGER STUD
18	93001960	HEX. SOCKET BUTTON BOLT
19	93505951	UNIVERSAL SPANNER
20	93019720	BRUSH

ACCESSORIES

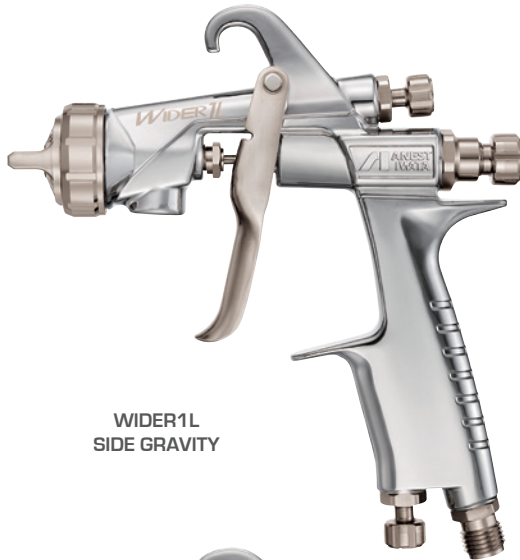
Ref.	Code	Description
	5655	REPAIR SERVICE KIT (includes: 6, 8, 10, 12, 17, 18)

FLEET APPLICATIONS

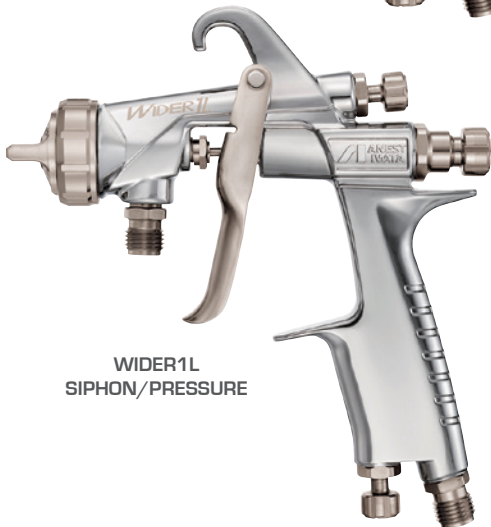
HVLP SIPHON | SIDE GRAVITY | PRESSURE SPRAY GUNS



WIDER1L



WIDER1L
SIDE GRAVITY



WIDER1L
SIPHON/PRESSURE

See page 67
for cup/ siphon
container options
(sold separately)

FEATURES

- HVLP spray gun with low operating air pressure
- Siphon and gravity models with proven Split Nozzle™ Technology for increased material savings
- Lightweight, ergonomic design
- Easier maintenance & cleaning
- Intuitive, user-friendly pattern adjustment
- Larger air valve seat set orifices for consistent installation
- Corrosion-resistant stainless steel fluid passages

TECHNICAL



WIDER1L SIPHON - SPLIT NOZZLE TECHNOLOGY

Model	Ø mm	No.	bar/psi	m³/min	CFM	mm
WIDER1L-2-12J2S	1.2	WIDER1L-2-J2	1.0/14.5	60	7.1	170
WIDER1L-2-14J2S	1.4	WIDER1L-2-J2	1.0/14.5	80	7.1	180
WIDER1L-2-16J2S	1.6	WIDER1L-2-J2	1.0/14.5	95	7.1	190

WIDER1L SIDE GRAVITY - SPLIT NOZZLE TECHNOLOGY

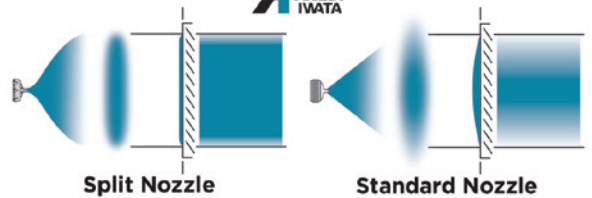
Model	Ø mm	No.	bar/psi	m³/min	CFM	mm
WIDER1L-2-12J2G	1.2	WIDER1L-2-J2	1.0/14.5	80 ^①	7.1	200 ^①
WIDER1L-2-14J2G	1.4	WIDER1L-2-J2	1.0/14.5	130 ^①	7.1	220 ^①
WIDER1L-2-16J2G	1.6	WIDER1L-2-J2	1.3/18.9	100	8.5	220

WIDER1L PRESSURE

Model	Ø mm	No.	bar/psi	m³/min	CFM	mm
WIDER1L-12G2P	1.2	WIDER1L-G2	3.4/49.3	350	18.7	270

• Spraying distance : 200mm (for all models) • Viscosity: 20s/NK-2
Air nipple: G1/4 and fluid nipple: G1/4 (for all models) • ① Viscosity: 12s/NK-2

PROVEN SPLIT NOZZLE™ TECHNOLOGY



Split Nozzle

Standard Nozzle

ORDER Information - WIDER1L Siphon - Split Nozzle Technology

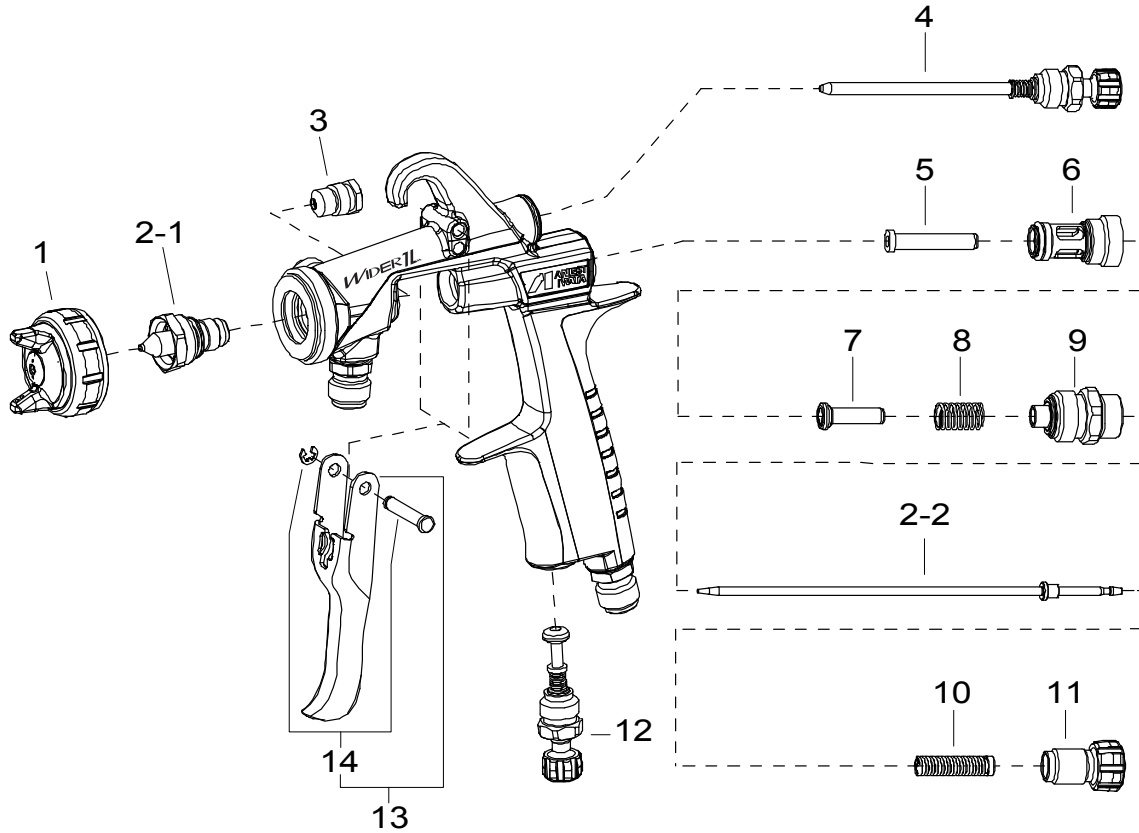
	Ø 1.2	Ø 1.4	Ø 1.6
SIPHON SPRAY GUN	11015	11025	11035
NOZZLE + NEEDLE SET	93013870	93013890	93013920
AIR CAP SET	WIDER1L-2-J2 93013840		

ORDER Information - WIDER1L Side Gravity - Split Nozzle Technology

	Ø 1.2	Ø 1.4	Ø 1.6
SIDE GRAVITY SPRAY GUN	11020	11030	11040
NOZZLE + NEEDLE SET	93013870	93013890	93013920
AIR CAP SET	WIDER1L-2-J2 93013840		

ORDER Information - WIDER1L Pressure

	Ø 1.2
PRESSURE SPRAY GUN	11010
NOZZLE + NEEDLE SET	93013860
AIR CAP SET	WIDER1L-G2 93013820



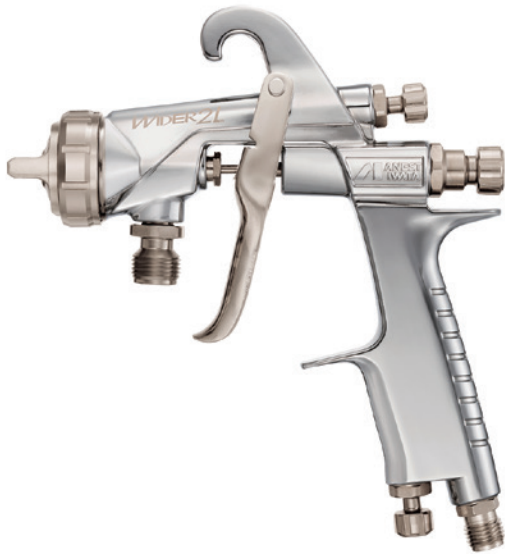
SPARE PARTS

Ref.	Code	Description
1		AIR CAP SET
2-1		NOZZLE + NEEDLE SET
3	93765610	NEEDLE PACKING CARTRIDGE
4	93012580	PATTERN ADJUSTMENT SET
5	93001790	AIR VALVE SHAFT
6	93001640	AIR VALVE SEAT SET
7	93001690	AIR VALVE
8	93001700	AIR VALVE SPRING
9	93012630	FLUID ADJUSTMENT GUIDE
10	93002820	FLUID NEEDLE SPRING
11	93012650	FLUID ADJUSTMENT KNOB
12	93012660	AIR ADJ. SET
13	93013800	TRIGGER ASSEMBLY
14	93013810	TRIGGER STUD ASSEMBLY

ACCESSORIES

Ref.	Code	Description
	93017689	AIR CAP PACKING
	5654	REPAIR SERVICE KIT (includes: 3, 6, 8, 10, 14)

WIDER2L



FEATURES

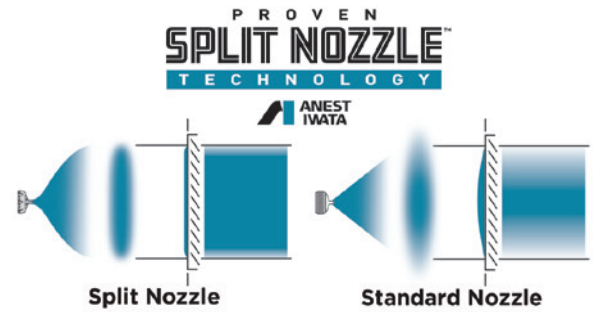
- HVLP spray gun with low operating air pressure
- Available with proven Split Nozzle™ Technology for increased material savings
- Lightweight, ergonomic design
- Easier maintenance & cleaning
- Intuitive, user-friendly pattern adjustment
- Larger air valve seat set orifices for consistent installation
- Corrosion-resistant stainless steel fluid passages

TECHNICAL



WIDER2L PRESSURE						
WIDER2L-10G2P	1.0	WIDER2L-G2	2.0/28	300	16.6	250
WIDER2L-12G2P	1.2	WIDER2L-G2	2.0/28	500	16.6	300
WIDER2L-14G2P	1.4	WIDER2L-G2	2.0/28	500	16.6	300
WIDER2L-16G2P	1.6	WIDER2L-G2	0.7/10	500	16.6	270
WIDER2L-18G2P	1.8	WIDER2L-G2	0.7/10	500	16.6	260
WIDER2L-20G2P	2.0	WIDER2L-G2	0.7/10	500	16.6	240
WIDER2L PRESSURE - SPLIT NOZZLE TECHNOLOGY						
WIDER2L-2-08G2P	0.8	WIDER2L-2-G2	2.0/28	95	15.2	320
WIDER2L-2-10G2P	1.0	WIDER2L-2-G2	2.0/28	100	15.2	330
WIDER2L-2-12G2P	1.2	WIDER2L-2-G2	2.0/28	130	15.2	330
WIDER2L-2-13G2P	1.3	WIDER2L-2-G2	2.0/28	130	15.2	340
WIDER2L-2-14G2P	1.4	WIDER2L-2-G2	2.0/28	130	15.2	340
WIDER2L-2-15G2P	1.5	WIDER2L-2-G2	2.0/28	130	15.2	340

Spraying distance : 200mm (for all models) • Viscosity : 20s/NK-2
Air nipples : G1/4 and fluid nipples : G3/8 (for all models)



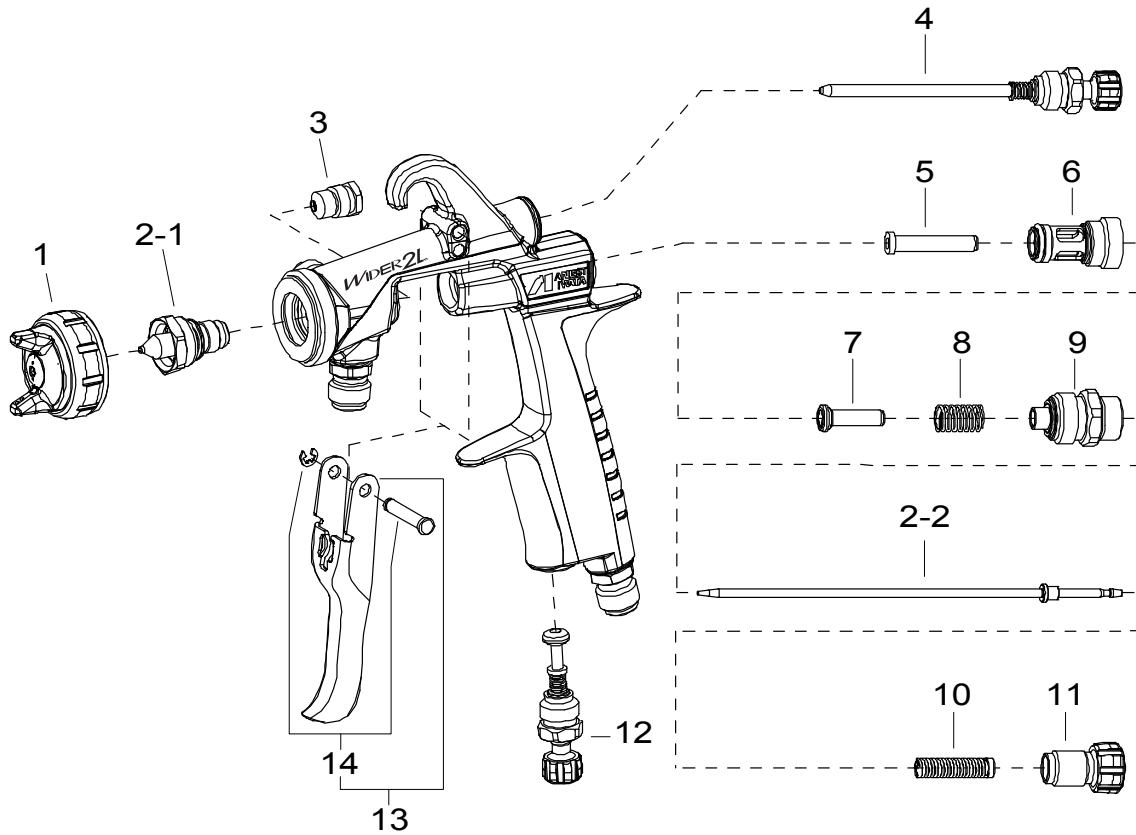
ORDER Information - WIDER2L Pressure

	ø 1.0	ø 1.2	ø 1.4	ø 1.6	ø 1.8	ø 2.0
PRESSURE SPRAY GUN	21010	21011	21012	21016	21017	21018
NOZZLE + NEEDLE SET	93014190	93014200	93014210	WIDER2L-X5	WIDER2L-X6	WIDER2L-X7
AIR CAP SET	WIDER2L-2-G2 93014150					
	WIDER2L-G2 TEST CAP 93014350					

ORDER Information - WIDER2L Pressure - Split Nozzle Technology

	ø 0.8	ø 1.0	ø 1.2	ø 1.3	ø 1.4	ø 1.5
PRESSURE SPRAY GUN	21013	21015	21020	21021	21022	21023
NOZZLE + NEEDLE SET	93019850	93014230	93014240	WIDER2L-X2	WIDER2L-X3	WIDER2L-X4
AIR CAP SET	WIDER2L-2-G2 93014170					
	WIDER2L-G2 TEST CAP 93014350					





SPARE PARTS

Ref.	Code	Description
1		AIR CAP SET
2-1		NOZZLE + NEEDLE SET
3	93810620	NEEDLE PACKING CARTRIDGE
4	93011630	PATTERN ADJUSTMENT SET
5	93001790	AIR VALVE SHAFT
6	93001640	AIR VALVE SEAT SET
7	93001690	AIR VALVE
8	93001700	AIR VALVE SPRING
9	93012630	FLUID ADJUSTMENT GUIDE
10	93002820	FLUID NEEDLE SPRING
11	93012650	FLUID ADJUSTMENT KNOB
12	93012660	AIR ADJ. SET
13	93014500	TRIGGER ASSEMBLY
14	93013810	TRIGGER STUD ASSEMBLY

ACCESSORIES

Ref.	Code	Description
	93017700	AIR CAP PACKING
	5654	REPAIR SERVICE KIT (includes: 3, 6, 8, 10, 14)

AIR GUNSA AZ1-HVLP-CONCEPT



FEATURES

- HVLP spray gun with low operating air pressure
- Specially designed air cap delivers a long spray pattern with extra fine atomization and very little overspray
- Experienced and novice painters can achieve a consistent, high quality finish at budget cost
- Easy maneuverability and improved ergonomics
- Compatible with ANEST IWATA pressure pots and diaphragm pumps

TECHNICAL

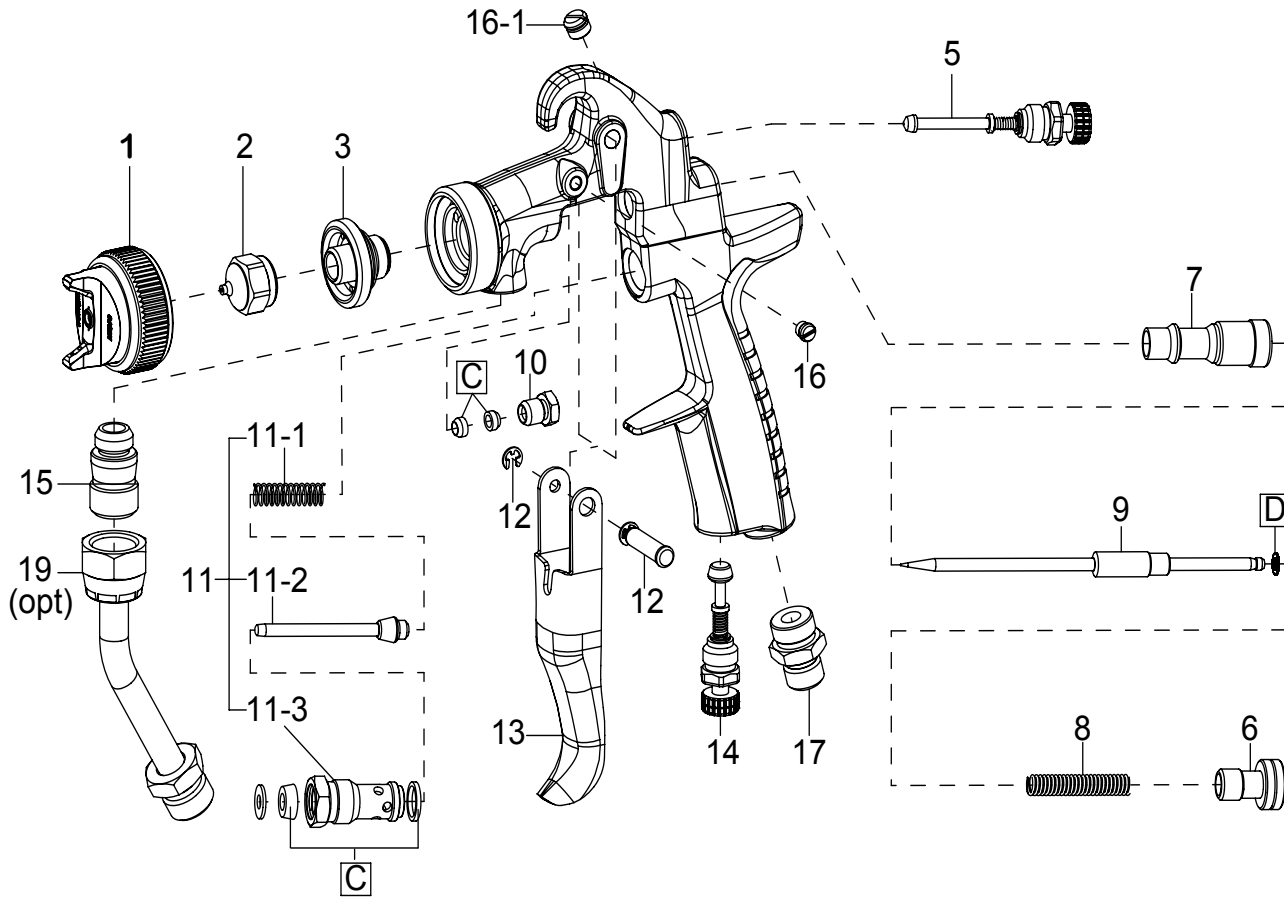


AZ1-HVLP-CONCEPT							
AZ1-HVLP-10P	1.0	HVLP -P6	1.4/20	400	9.88	310	
AZ1-HVLP-13P	1.3					360	
AZ1-HVLP-15P	1.5					380	
AZ1-HVLP-18P	1.8						
AZ1-HVLP-20P	2.0						
AZ1-HVLP-25P	2.5	HVLP -P7	1.2/17		8.12	320	
AZ1-HVLP-30P	3.0						
AZ1-HVLP-35P	3.2						

ORDER Information - AZ1-HVLP-CONCEPT								
	ø 1.0	ø 1.3	ø 1.5	ø 1.8	ø 2.0	ø 2.5	ø 3.0	ø 3.2
PRESSURE SPRAY GUN	9350	9351	9352	9353	9354	9355	9356	9357



AIR GUNSA AZ1-HVLP-CONCEPT



SPARE PARTS

Ref.	Code	Description	Qty.
1	9370	AIR CAP SET	1.0mm - 2.0mm
1	9371	AIR CAP SET	2.5mm - 3.5mm
2+9	9380	FLUID NOZZLE + NEEDLE SET	1.0mm
2+9	9381	FLUID NOZZLE + NEEDLE SET	1.3mm
2+9	9382	FLUID NOZZLE + NEEDLE SET	1.5mm
2+9	9383	FLUID NOZZLE + NEEDLE SET	1.8mm
2+9	9384	FLUID NOZZLE + NEEDLE SET	2.0mm
2+9	9385	FLUID NOZZLE + NEEDLE SET	2.5mm
2+9	9386	FLUID NOZZLE + NEEDLE SET	3.0mm
2+9	9387	FLUID NOZZLE + NEEDLE SET	3.5mm
3	N/A	NOZZLE HOLDER	
5	93842601	PATTERN ADJUSTMENT SET	
6	9145B	FLUID NEEDLE ADJ. KNOB	
7	9135	NEEDLE ADJ. GUIDE	
8	9155B	NEEDLE SPRING	

Ref.	Code	Description	Qty.
10	9134	NEEDLE PACKING NUT	
11	9211	AIR VALVE SET	
11-1	9156B	AIR VALVE SPRING	
11-2	9146B	AIR VALVE	
11-3	9148B	AIR VALVE SEAT	
12	9133	TRIGGER STUD	
13	9256	TRIGGER	
14	93845531	AIR ADJUSTMENT SET	
15	9324	FLUID NIPPLE G3/8"	
16	9196	SCREW	
16-1	9257	PLUG	
17	9213	AIR NIPPLE G1/4"	
19	9324	PAINT TUBE (OPT. FOR AZ1 HTE 2P)	
C	9258B	PACKING SET	(3 pcs./1pk)
D	9259	SLIDE RING KIT	(10 pcs./1pk)

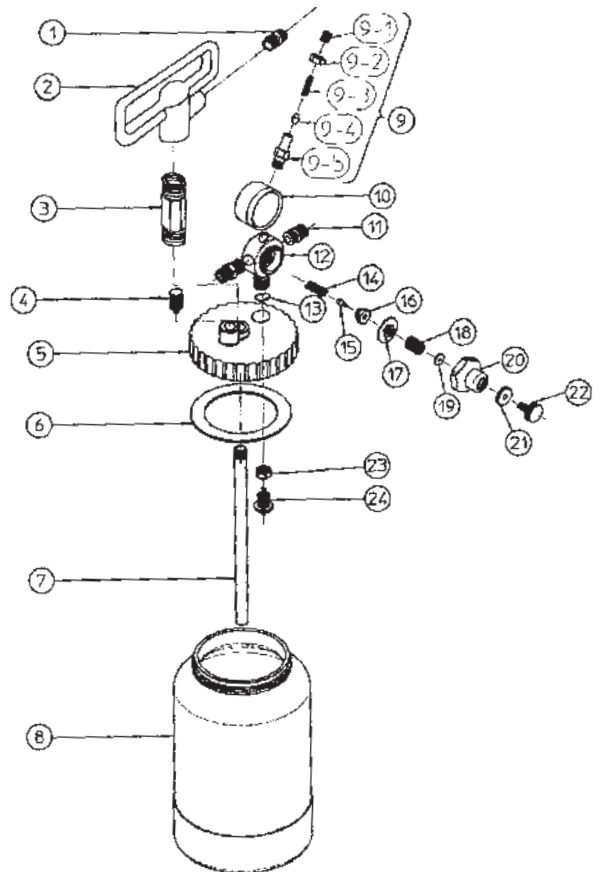
PC-18D 2 QUART PRESSURE POT



FEATURES:

- Max. Operating Pressure: 50.5 psi
- Fluid Nipple: G 3/8" (PF3/8)
- Capacity: 2 qt
- Tank: Aluminum
- Temperature Range: 5-40°C / 41-104°F

PC-18D		
Ref.	Code	Description
	6003B	PC-18D 2 QUART PRESSURE POT
1	94056350	FLUID JOINT
2	94055350	HANDLE
3	94057350	HANDLE JOINT
4	94003350	AIR RELEASE VALVE
5	94053350	LID
6	94900210	LID PACKING (2 pcs./1 pk.)
7	94001350	SUCTION PIPE
8	94000351	CONTAINER SET
9	94007350	SAFETY VALVE
9-1	94012350	PLUG
9-2	94011350	NUT
9-3	94010350	SAFETY VALVE SPRING
9-4	94009350	SAFETY VALVE SPRING SEAT
9-5	94008350	SAFETY VALVE BODY
10	94048400	PRESSURE GAUGE
11	94027350	JOINT
12	94049350	AIR REGULATOR BODY SET
13	96631012	O RING
14	94016350	SPRING
15	94017350	REGULATOR SEAT
16	94018350	GUIDE
17	94019350	DIAPHRAGM SET
18	94023350	DIAPHRAGM SET SPRING
19	94038350	SPRING HOLDER
20	94074350	CAP
21	94025350	NUT
22	94026350	KNOB
23	94058350	NUT
24	94904151	CHECK VALVE SET



PC-18DT PTFE COATED 2 QUART PRESSURE POT

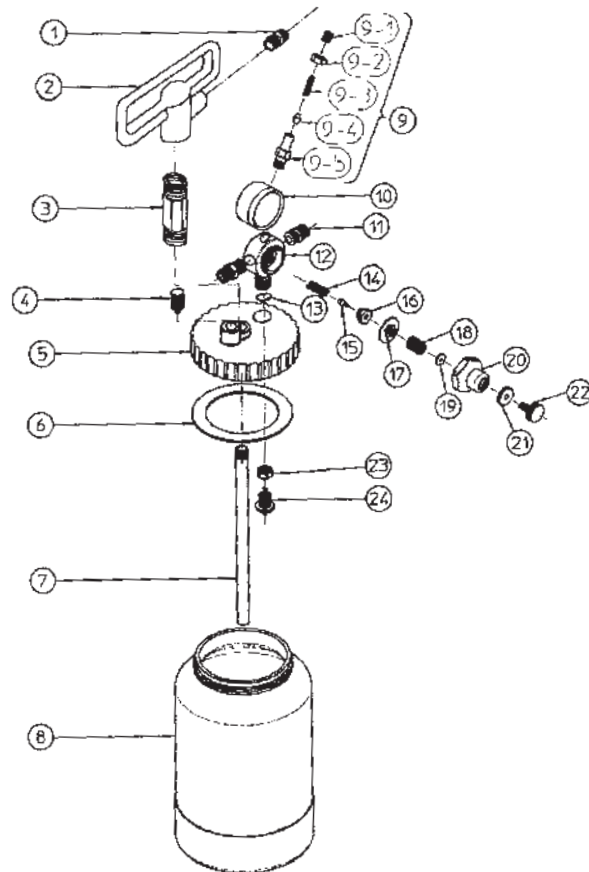


FEATURES:

- Max. Operating Pressure: 50.5 psi
- Fluid Nipple: G 3/8" (PF3/8)
- Capacity: 2 qt
- Tank: Aluminum
- Temperature Range: 5~40°C / 41-104°F

PC-18DT - PTFE COATED

Ref.	Code	Description
	6003BT	PC-18DT 2 QUART POT PTFE COATED
1	94065350	FLUID JOINT
2	94055350	HANDLE
3	94066350	HANDLE JOINT
4	94003350	AIR RELEASE VALVE
5	94053350	LID
6	94900210	LID PACKING (2 pcs./1 pk.)
7	94067350	SUCTION PIPE
8	94041351	CONTAINER SET
9	94007350	SAFETY VALVE
9-1	94012350	PLUG
9-2	94011350	NUT
9-3	94010350	SAFETY VALVE SPRING
9-4	94009350	SAFETY VALVE SPRING SEAT
9-5	94008350	SAFETY VALVE BODY
10	94048400	PRESSURE GAUGE
11	94027350	JOINT
12	94063350	AIR REGULATOR BODY SET
13	96631012	O RING
14	94016350	SPRING
15	94017350	REGULATOR SEAT
16	94018350	GUIDE
17	94019350	DIAPHRAGM SET
18	94023350	DIAPHRAGM SET SPRING
19	94038350	SPRING HOLDER
20	94074350	CAP
21	94025350	NUT
22	94026350	KNOB
23	94068350	NUT
24	94069350	CHECK VALVE SET



PET-10 2.5 GALLON PRESSURE POT

FEATURES

- Heavy duty pressure pot features a removable stainless steel inner tank liner and stainless steel pick up tube for easy cleaning
- Suitable for use with both solvent and waterborne materials using any ANEST IWATA pressure feed spray gun
- Includes dual regulators for independent control of fluid and air pressures
- Features standard 1/4" air inlet and 3/8" fluid inlet with a maximum operating pressure of 58 PSI



Technical

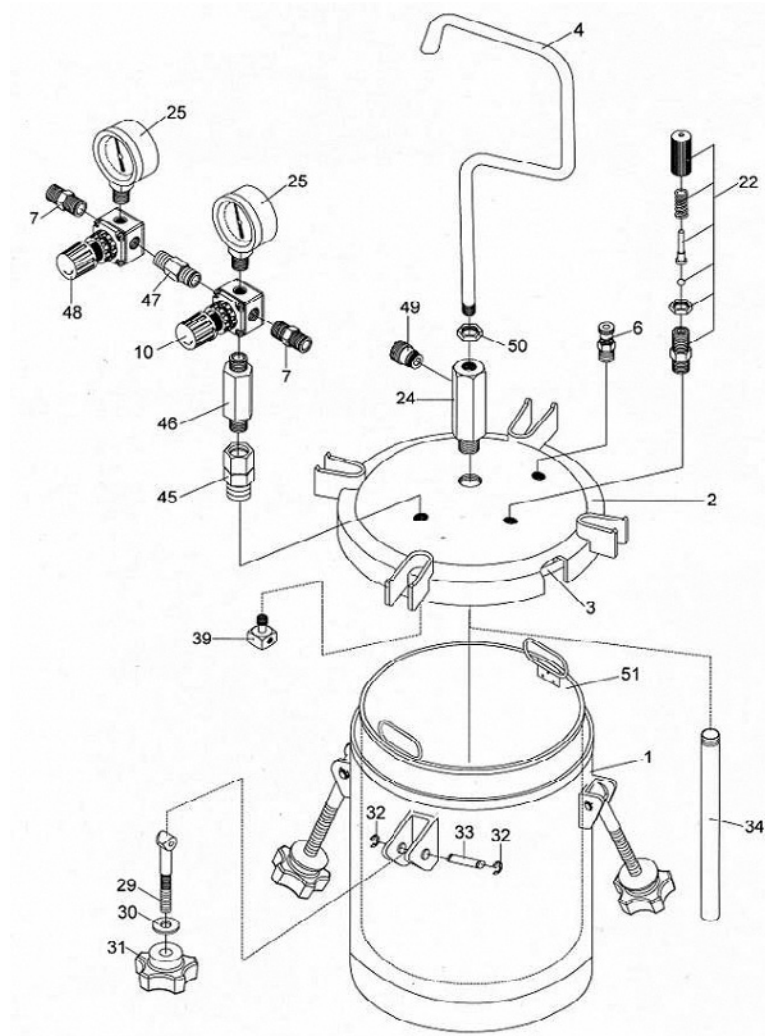
Max Operating Pressure	58 PSI
Air Inlet/Outlet Joint	G1/4"
Fluid Outlet Joint	G3/8"
Capacity	2.6 gal
Inner Tank Capacity	2.2 gal - Stainless Steel
Weight	24.25 lbs
Dimensions	12.2 x 12.2 x 22.2 in
Temperature Range	41-104°F / 5-40°C



Removable Inner Tank Liner
in Stainless Steel



PET-10 2.5 GALLON PRESSURE POT



PET-10 SPARE PARTS

Ref.	Code	Description
	6315	PET-10 2 GALLON PRESSURE POT
	04020000	MAIN BODY
2	04020010	LID ASSEMBLY
3	04020200	LID PACKING
4	04020020	HANDLE
6	04020030	EXHAUST VALVE
7	94020210	AIR INLET JOINT / OUTLET JOINT G1/4"
10	94015180	PRESSURE REGULATOR (FOR TANK)
22	04016390	SAFETY VALVE
24	04020040	FLUID OUTLET CONNECTING JOINT SUS 303
25	04016020	PRESSURE GAUGE
29	04020190	HANDLE BOLT
30	04020060	WASHER

Ref.	Code	Description
31	04020070	THUMB NUT
32	04020220	C-SNAP RING
33	04020230	STUD
34	04020090	SUCTION PIPE SUS 303
39	94016310	AIR FLOW GUIDE
45	94020100	ADAPTER
46	94020110	ADAPTER
47	94020120	ADAPTER
48	04020130	PRESSURE REGULATOR (FOR GUN)
49	04020140	FLUID OUTLET JOINT SUS 303 3/8"
50	04020160	NUT
51	04020170	INNER TANK SUS 304

PREMIUM MICRO-FABRIC SPRAY SUIT by FBS ProPlus Gard



The ANEST IWATA Premium Micro-Fabric Spray Suit is so comfortable you'll forget it's on. Micro coated material to provide a barrier against solvent and dust particles, yet lightweight and breathable for those hot summer days.

This spray suit provides anti-static, chemical protection and is well suited for work in paint shops, chemical industries, and many other related fields.

FEATURES

- Micro coated fabric to block particles from penetration
- Breathable, lightweight material
- Comfortable to wear all day in any temperature
- Anti-static reduces static build-up and prevents the risk of static discharge
- Machine washable - durable material and construction allows for reuse
- Two-way zipper - zips from torso and chin for comfort and convenience
- Scuba style hood for added protection and coverage
- Deep back pocket keeps accessible items secure while working
- Elastic wrist, ankle, and face protection from particles
- Elastic waist for optimal fit

ORDER Information - PREMIUM MICRO-FABRIC SPRAY SUIT

Ref.	Description
AIUS60501	M Body Height: 5'6" - 5'9"
AIUS60502	L Body Height: 5'9" - 6'0"
AIUS60503	XL Body Height: 6'0" - 6'2"
AIUS60504	XXL Body Height: 6'2" - 6'4"

EU Standard: Category III/EN 13034/Type 6



ANEST IWATA SPRAY GUN CABINET



Design specifically for the purpose of storing spray guns. This cabinet comes with a variety of spray gun holders to suit your different Anest Iwata spray gun needs. It can house up to 24 spray guns and has storage space for your accessories. This premium cabinet is made from high-quality steel with a powder-coated finish and features a digital lock and keyed entry to keep all of your equipment safe and secure.

Cabinet measures 20 x 30 x 12 inches, wall mount

ORDER Information	
Ref.	Description
PG-1A	ANEST IWATA SPRAY GUN CABINET (Single Unit)

ANEST IWATA MK-5 PROFESSIONAL SPRAY GUN MAINTENANCE KIT



Keep your spray guns in tip top shape with the ANEST IWATA MK-5 Professional Spray Gun Maintenance Kit. It offers a variety of indispensable tools when it comes to cleaning and maintaining your spray guns.

ORDER Information - MK-5	
Ref.	Description
2950	ANEST IWATA MK-5 PROFESSIONAL SPRAY GUN MAINTENANCE KIT

ECLIPSE SERIES AIRBRUSHES



Iwata Eclipse HP-CS Gravity Feed
Dual Action Airbrush



Iwata Eclipse HP-BS Gravity Feed
Dual Action Airbrush



Iwata Eclipse Takumi Side Feed Dual
Action Airbrush



Iwata Eclipse HP-BCS Siphon Feed Dual
Action Airbrush



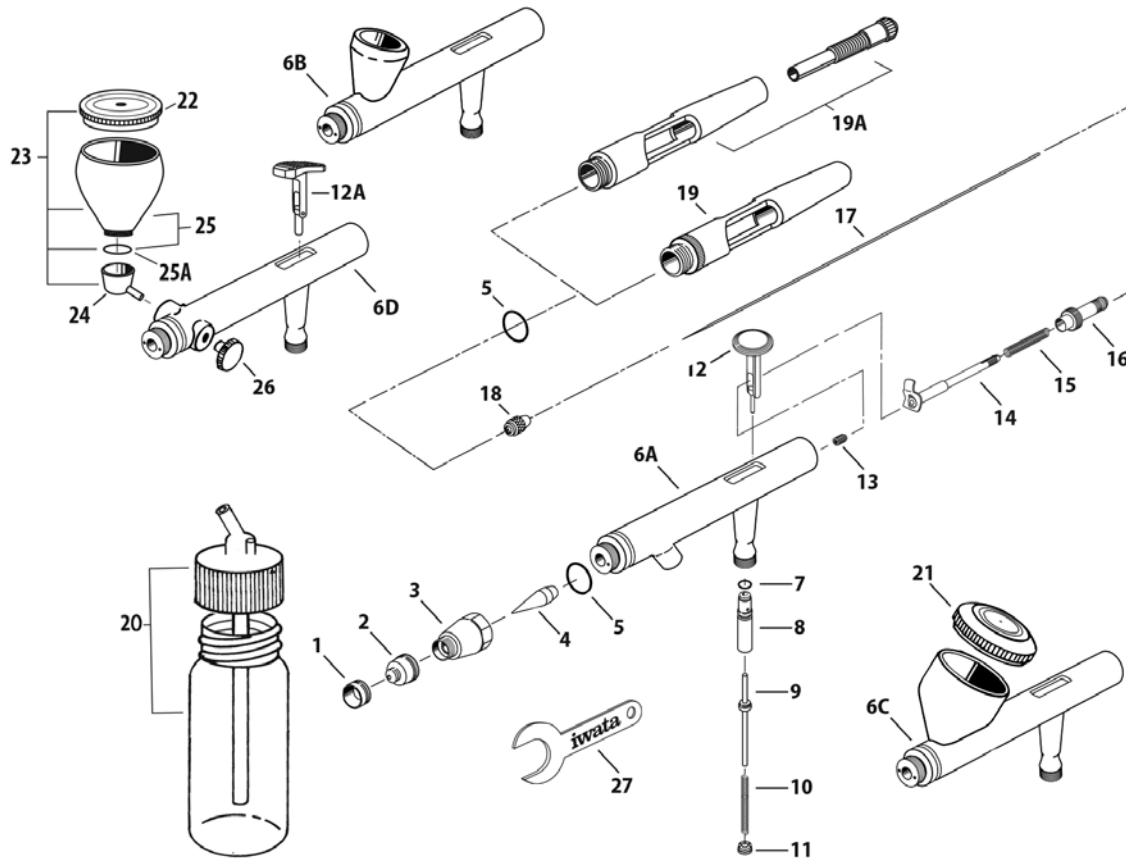
FEATURES

- High flow allows atomization of a wider variety of liquids with less need for reducing or thinning.
- Achieve a controlled fine line to controlled wide spray.
- Exclusive compression fit nozzle that is easy to clean and assemble.
- Quick Flush Cutaway Handle allows easy access to the needle to quickly empty the paint reservoir for cleaning.

**ORDER Information -
IWATA ECLIPSE SERIES AIRBRUSHES**

	Code	Head System
HP-CS GRAVITY	ECL4500	E3
HP-BS GRAVITY	ECL2500	E3
ECLIPSE TAKUMI	ECL350T	E3
HP-BCS SIPHON	ECL2000	E5

ECLIPSE SERIES AIRBRUSHES



SPARE PARTS

#	ITEM DESCRIPTION	ITEM #	HP-BCS	HP-BS	HP-CS	TAKUMI	
1	Needle Cap	I6011	■	■	■	OPT	
1A	Needle Cap (Crown)	I1050	OPT	OPT	OPT	■	
2	Nozzle Cap	E5	I6021	■	x	x	x
		E3	I6022	x	■	■	■
3	Cap	I6031	■	■	■	■	
4	Nozzle	E5	I6041	■	x	x	x
		E3	I6042	x	■	■	■
5	O-ring	I6051	■	■	■	■	
6A	HP-BSC Body *	-	■	x	x	x	
6B	HP-BS Body *	-	x	■	x	x	
6C	HP-CS Body *	-	x	x	■	x	
6D	Takumi Body *	-	x	x	x	■	
7	Valve Piston Packing	I5801	■	■	■	■	
8	Air Valve Guide Body	I6081	■	■	■	■	
9	Air Valve	I6091	■	■	■	■	
10	Air Valve Spring	I5104	■	■	■	■	
11	Air Valve Guide Screw	I6111	■	■	■	■	
12	Main Lever	I6121	■	■	■	■	
12A	Main Lever (Control)	I6124	OPT	OPT	OPT	■	
13	Needle Packing Screw Set (PTFE)	I7251	■	■	■	■	
14	Needle Chucking Guide	I7151	■	■	■	■	
15	Needle Spring	I1352	■	x	x	x	
		I1351	x	■	■	■	

#	ITEM DESCRIPTION	ITEM #	HP-BCS	HP-BS	HP-CS	TAKUMI	
16	Spring Guide	I7701	■	■	■	■	
17	Needle	E5	I6171	■	x	x	x
		E3	I6172	x	■	■	x
		E3	I6176	x	x	x	■
18	Needle Chucking Nut	I1202	■	■	■	■	
19	Single Cut Handle	I6191	■	■	■	■	
	Preset Handle	I1552	OPT	OPT	OPT	OPT	
19A	Handle (Preset/Single Cut)	I1556	OPT	OPT	OPT	■	
20	Bottle	2 oz / 60 ml	A4702	■	x	x	x
21	Lid	I6181	x	x	■	x	
22	Cup Lid (Siphon Cut)	0.24 oz / 7 ml	I6187	x	x	x	■
23	Cup Assembly	0.24 oz / 7 ml	I0710	x	x	x	■
24	Cup Adapter (Side-Gravity)	I0700	x	x	x	■	
25	Cup (Gravity)	0.24 oz / 7 ml	N0702	x	x	x	■
25A	Cup (Gravity) O-ring	0.24 oz / 7 ml	N0713	x	x	x	■
26	Blanking Cover	I0452	x	x	x	■	
	QuickFit Quick Disconnect Set	I1603	OPT	OPT	OPT	OPT	
	QuickFit Quick Disconnect Airbrush Adaptor	I1604	OPT	OPT	OPT	OPT	
	Airbrush Adapter for Paasche Air Hose	J001	OPT	OPT	OPT	OPT	
	Airbrush Adapter for T&C/Badger Air Hoses	J002	OPT	OPT	OPT	OPT	
27	Spanner Head Cap Wrench	I6301	■	■	■	■	

■ = yes X = no OPT = optional
*Replacement parts not available.

NEO FOR IWATA CN AND BCN AIRBRUSHES



NEO for Iwata CN Gravity Feed
Dual Action Airbrush

FEATURES

- Designed to deliver soft, effortless coverage at low air pressures for many types of spray applications.
- Affordable option for general purpose spraying and for anyone wanting to airbrush for the first time.



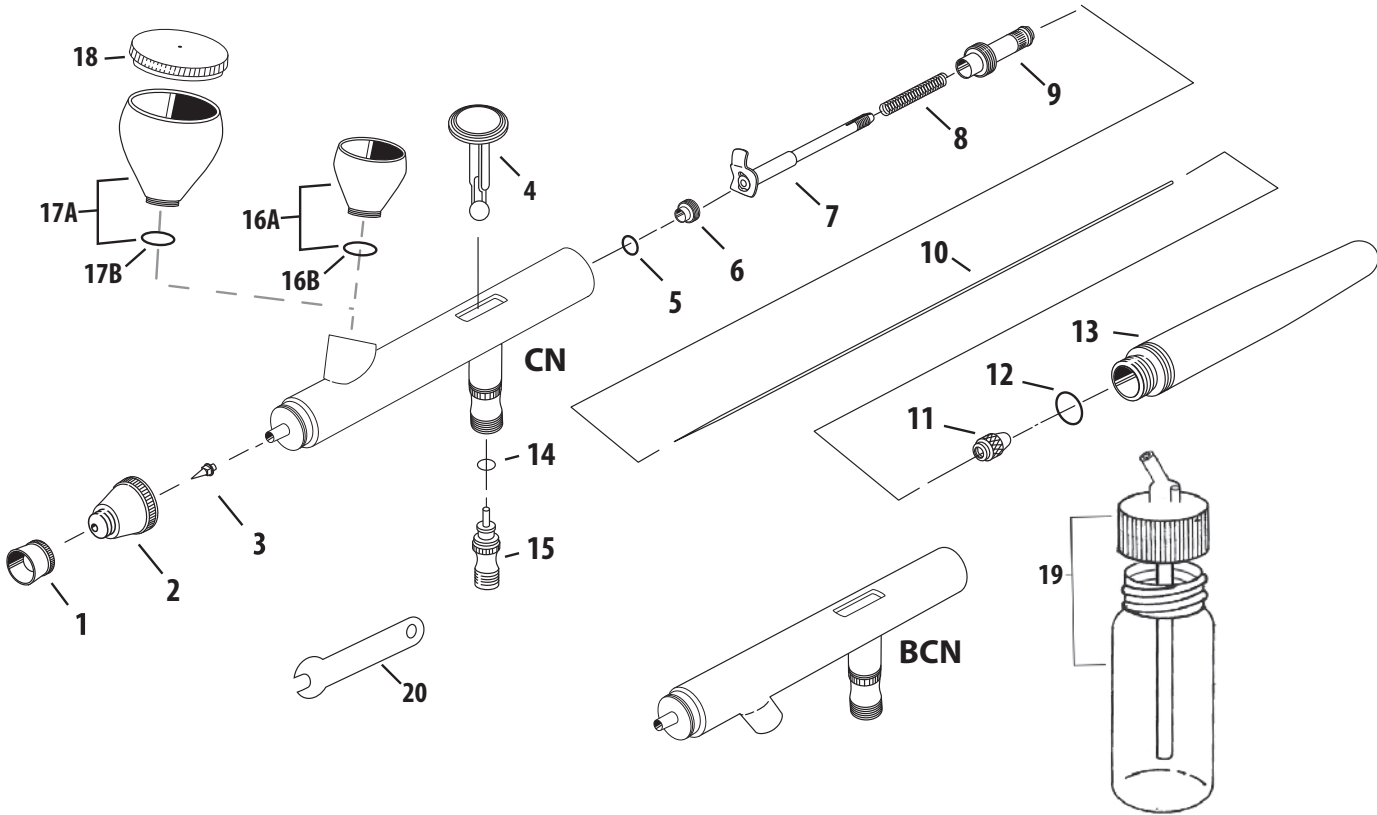
NEO for Iwata BCN Siphon Feed
Dual Action Airbrush

**ORDER Information -
IWATA ECLIPSE SERIES AIRBRUSHES**

	Code	Head System
NEO FOR IWATA CN	N4500	N3
NEO FOR IWATA BCN	N2000	N5



NEO FOR IWATA CN AND BCN AIRBRUSHES



SPARE PARTS

#	ITEM DESCRIPTION	ITEM #	BCN	CN
1	Needle Cap	N1101	■	■
2	Nozzle Cap	N3	x	■
		N5	■	x
3	Nozzle	N3	x	■
		N5	■	x
4	Main Lever	N1001	■	■
5	Needle Packing (PTFE)	N1501	■	■
6	Needle Packing Screw	N1251	■	■
7	Needle Chucking Guide	N1151	■	■
8	Needle Spring	N1351	■	■
9	Spring Guide	N1701	■	■
10	Needle	N3	x	■
		N5	■	x

#	ITEM DESCRIPTION	ITEM #	BCN	CN
11	Needle Chucking Nut	N1201	■	■
12	Handle O-ring	N1051	■	■
13	Handle	N0901	■	■
14	Air Valve O-ring	N1502	■	■
15	Valve Set With Valve Spring	N 0201	■	■
16A	Cup (Gravity)	0.10 oz / 3 ml N0701	x	■
16B	Cup (Gravity) O-ring	0.10 oz / 3 ml N0712	x	■
17A	Cup (Gravity)	0.24 oz / 7 ml N0702	x	■
17B	Cup (Gravity) O-ring	0.24 oz / 7 ml N0713	x	■
18	Cup (Gravity) Lid	0.24 oz / 7 ml N0954	x	■
19	Bottle	2 oz / 60 ml A4702	■	x
20	Spanner	N1651	■	■

■ = yes X = no OPT = optional
*Replacement parts not available.

NEO AIR FOR IWATA AIRBRUSH COMPRESSOR



FEATURES

- Ultra quiet miniature airbrush compressor ideal for light-use, low pressure applications.
- Working pressures of 4-15 PSI.
- Designed for the NEO for Iwata Airbrush Series, it also pairs well with most gravity feed Iwata airbrushes.
- Single on/off switch offers three air pressure settings to adjust the air pressure.
- Includes a detachable airbrush hose for Iwata airbrushes, detachable airbrush holder, and AC adapter with international plugs.

ORDER Information - NEO AIR For Iwata Airbrush Compressor

Description	Code
NEO AIR FOR IWATA AIRBRUSH COMPRESSOR	IS30UP

IWATA SMART JET AIRBRUSH COMPRESSOR



FEATURES

- Compact and quiet for general purpose applications that require low to medium air pressure.
- Preset working pressure of 20-25 PSI.
- Equipped with auto shut-off technology, which enables the compressor to shut itself off when not in use.
- Fully adjustable air regulator with gauge
- Includes a high strength polyurethane airbrush hose for Iwata airbrushes, air hose adaptors, a replacement air intake filter and manual.

ORDER Information - Iwata Smart Jet Airbrush Compressor

Description	Code
IWATA SMART JET AIRBRUSH COMPRESSOR	IS850



IWATA POWER JET PRO AIRBRUSH COMPRESSOR



FEATURES

- Remarkably quiet, feature rich dual-station airbrush compressor.
- Low to high output from 1-50 PSI.
- Independently operate two airbrushes at a time.
- Auto shut-off technology enables the compressor to shut itself off when not in use.
- 1/6 hp motor and a 2 liter air storage tank.
- Includes two high strength polyurethane air hoses for Iwata airbrushes attached to the compressor with quick disconnect fittings, extra air intake filter, adapter fittings and manual.

**ORDER Information -
Iwata Power Jet Pro Airbrush Compressor**

Description	Code
IWATA POWER JET PRO AIRBRUSH COMPRESSOR	IS975

IWATA WORKSHOP IWC28S QUIET AIR COMPRESSOR



FEATURES

- 2.0 HP motor produces 5.3 CFM @ 90 PSI and 6.4 CFM at 40 PSI.
- Ultra-durable 8 gallon steel tank.
- Quick fill cycle kicks in at only 70 dB and the pump will automatically shut off when the tank is full.
- The stainless-steel rust resistant tank and premium pump components work together to extend the life of your Workshop by thousands of hours — at least 3 and sometimes up to 10 times longer than comparable models.
- Ready to use right out of the box with included 25 ft air hose and fitting

**ORDER Information -
Iwata Workshop IWC28S Quiet Air Compressor**

Description	Code
IWATA WORKSHOP IWC28S QUIET AIR COMPRESSOR	IWC28S



SPRAY GUN AND AIRBRUSH RECOMMENDATIONS

AUTOMOTIVE APPLICATION	W-400-LV-WBX	LPH-300-LV	LS-400 BASE SERIES 2	WS-400 BASE SERIES 2	LPH-400-LVX	LPH-400-LV	W-400-LV	WS-400 CLEAR SERIES 2	LPH-80	AIR GUNSA AZ3 HTE-S IMPACT	AIR GUNSA AZ3 HV-2	CUSTOM MICRON TAKUMI	ECLIPSE CS	NEO FOR IWATA CN	HP-TH2
PRIMER/SEALER	★	●			●					●	●				
UV PRIMER		●							★						
WATERBORNE BASE COAT			●	●											
SOLVENT BASE COAT	●		★		★										
SINGLE STAGE BASE COAT	●				●	●	●			●	●				
SPECIFIC BASE COATS				★	●										
CLEAR COAT	●				●	●	●	★		●	●				
TOUCH-UP/SPOT REPAIR		●							★						
CUSTOM GRAPHICS									★			●	★	●	●
GENERAL USE	●	●			●					●	●				
CERAMIC COATINGS									★						

- ★ Superior Performance
- Good Performance



Scan QR code to see the ANEST IWATA catalogs of coating equipment



Scan QR code to visit the Iwata website and learn more about airbrushing

ANEST IWATA Americas, Inc.

9525 Glades Drive
West Chester, Ohio 45011

Toll Free (800) 470-7068
questions@anestiwata.com

www.ANESTIWATA.com



CAT2021-SCH